

861193

# A CONDOMINIUM MAP OF TIMBERLINE COVE CONDOMINIUMS

A RESUBDIVISION OF LOT 4, HOLIDAY TRACTS SUBDIVISION  
LOCATED IN THE NW 1/4 OF SECTION 26, T.5S, R.78W. OF THE 6TH P.M.  
TOWN OF FRISCO, SUMMIT COUNTY, COLORADO  
SHEET 1 OF 5

MOUNTAIN MEADOWS  
CONDOMINIUMS I  
(REC. NO. 12482)

### LEGEND

- FOUND REBAR & YELLOW PLASTIC CAP (P.S. 10842)
- FOUND REBAR & YELLOW PLASTIC CAP (P.S. 10844)
- SET REBAR & ALUMINUM CAP (P.S. 20292)
- FOUND #4 REBAR
- FOUND BRASS CAP SET IN CONC. (P.S. 4824)
- WATER VALVE
- SANITARY SINK MANHOLE
- FINE HYDRANT
- SIGN
- LIGHT POLE

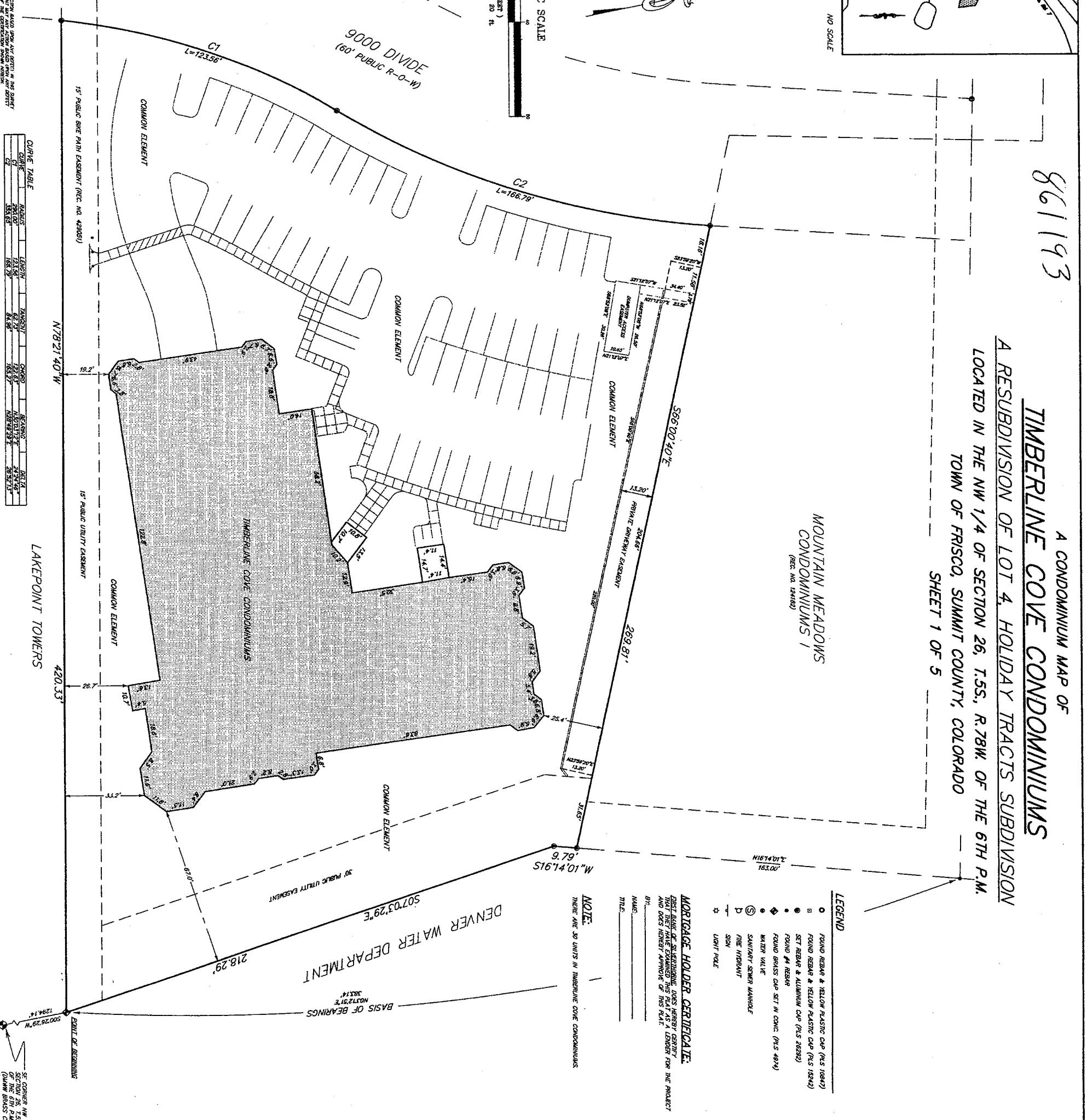
### MORTGAGE HOLDER CERTIFICATE:

BEST BANK OF SILVERSPRING, DOES HEREBY CERTIFY THAT IT HAS EXAMINED THIS PLAT AS A LENDER FOR THE PROJECT AND DOES HEREBY APPROVE OF THIS PLAT.

NAME: \_\_\_\_\_

TITLE: \_\_\_\_\_

**NOTE:**  
THERE ARE 30 UNITS IN TIMBERLINE COVE CONDOMINIUMS



**CURVE TABLE**

CURVE	ANGLE	LENGTH	TANGENT	CHORD	AREA
C1	123.56°	123.56'	61.78'	123.56'	1857.12
C2	166.79°	166.79'	83.39'	166.79'	3714.24

### OWNER'S CERTIFICATE:

I, THE UNDERSIGNED, OWNER OF THE SAID CONDOMINIUMS, DO HEREBY CERTIFY THAT THE PLAT AND SUBDIVISION SHOWN ON THIS PLAT, AND THE REBAR AND ALUMINUM CAPS AS SHOWN ON THIS PLAT, AND THE SANITARY SINK MANHOLES, FINE HYDRANTS, WATER VALVES, AND LIGHT POLES, ARE ALL IN ACCORDANCE WITH THE PLAT AND THE REQUIREMENTS OF THE COLORADO CONDOMINIUMS ACT, AND I HEREBY APPROVE OF THIS PLAT.

DATE: \_\_\_\_\_ DAY OF \_\_\_\_\_ 2001.

### ACKNOWLEDGEMENT:

THE FOREGOING INSTRUMENT WAS ACKNOWLEDGED BEFORE ME THIS 9<sup>TH</sup> DAY OF JULY 2001 AT EDWARDS COLORADO AS PRESIDENT OF COCKE PROPERTIES LIMITED PARTNERSHIP, A COLORADO LIMITED PARTNERSHIP.

WITNESS MY HAND AND OFFICIAL SEAL:  
 EDWARD OWING, PRESIDENT  
 BY: \_\_\_\_\_  
 AT COMMISSION EXPENSE: *gloper*

### TITLE COMPANY'S CERTIFICATE:

FRISCO PLANNING COMMISSION APPROVAL:

THE PLANNING COMMISSION OF FRISCO, COLORADO, REPRESENTED BY THE COMMISSION CHAIRMAN, DO HEREBY CERTIFY THAT THIS PLAT AND SUBDIVISION OF THE SAID CONDOMINIUMS, AND APPROVE THIS CONDOMINIUM MAP ON THE DATE OF \_\_\_\_\_ DAY OF \_\_\_\_\_ AD 2001.

FRISCO TOWN COUNCIL APPROVAL:

THE WITHIN PLAT OF "TIMBERLINE COVE CONDOMINIUMS" IS APPROVED BY THE TOWN COUNCIL OF FRISCO, COLORADO, REPRESENTED BY THE MAYOR FOR THE DATE OF \_\_\_\_\_ DAY OF \_\_\_\_\_ AD 2001.

TOWN CLERK: \_\_\_\_\_

ATTEST: \_\_\_\_\_

FRISCO PLANNING COMMISSION APPROVAL:

THE PLANNING COMMISSION OF FRISCO, COLORADO, REPRESENTED BY THE COMMISSION CHAIRMAN, DO HEREBY CERTIFY THAT THIS PLAT AND SUBDIVISION OF THE SAID CONDOMINIUMS, AND APPROVE THIS CONDOMINIUM MAP ON THE DATE OF \_\_\_\_\_ DAY OF \_\_\_\_\_ AD 2001.

FRISCO TOWN COUNCIL APPROVAL:

THE WITHIN PLAT OF "TIMBERLINE COVE CONDOMINIUMS" IS APPROVED BY THE TOWN COUNCIL OF FRISCO, COLORADO, REPRESENTED BY THE MAYOR FOR THE DATE OF \_\_\_\_\_ DAY OF \_\_\_\_\_ AD 2001.

TOWN CLERK: \_\_\_\_\_

ATTEST: \_\_\_\_\_

CLERK & RECORDER'S ACCEPTANCE:

THIS CONDOMINIUM MAP WAS ACCEPTED FOR FILING IN THE OFFICE OF THE SUMMIT COUNTY CLERK AND RECORDER ON THIS 13<sup>TH</sup> DAY OF JULY 2001 AND FILED FOR RECORD AT 1:30 PM, UNDER RECEIPT NUMBER 861193.

SUMMIT COUNTY CLERK AND RECORDER: \_\_\_\_\_

THE CONDOMINIUM DECLARATION OF TIMBERLINE COVE CONDOMINIUMS WAS RECORDED AT \_\_\_\_\_ ON 07/13/01 2001 AT RECEPTION NO. 861193.

SEAL OF SUMMIT COUNTY

CLERK & RECORDER

DATE: 07/26/01

TIME: 1:30 PM

RECEIVED

SEAL OF FRISCO

FRISCO PLANNING COMMISSION

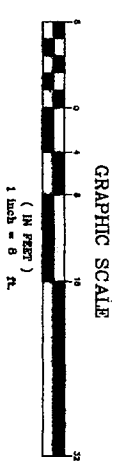
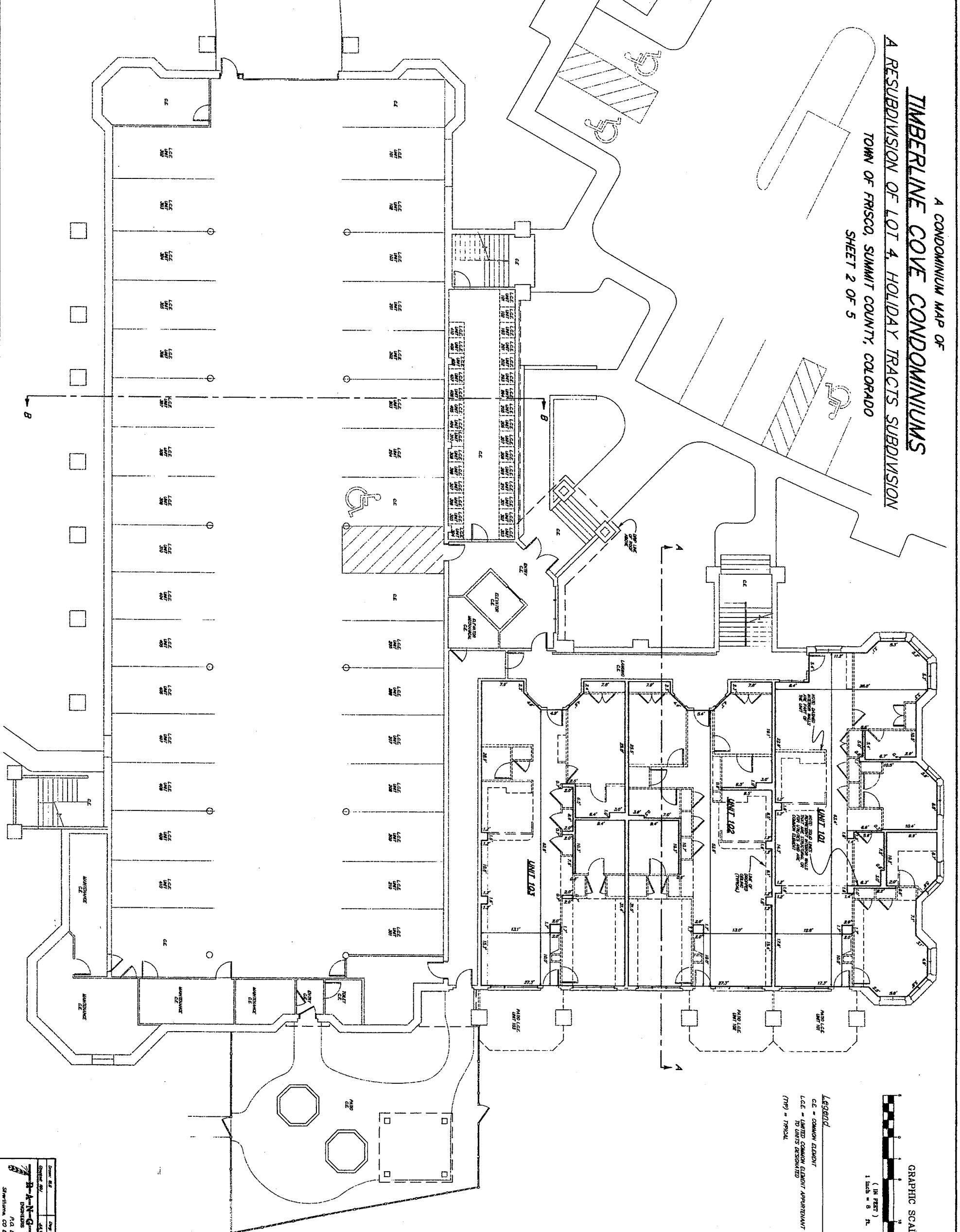
DATE: \_\_\_\_\_

TIME: \_\_\_\_\_

RECEIVED

Case H-98-B 60 pages

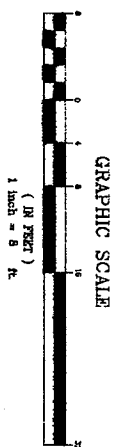
A CONDOMINIUM MAP OF  
**TIMBERLINE COVE CONDOMINIUMS**  
 A RESUBDIVISION OF LOT 4, HOLIDAY TRACTS SUBDIVISION  
 TOWN OF FRISCO, SUMMIT COUNTY, COLORADO  
 SHEET 2 OF 5



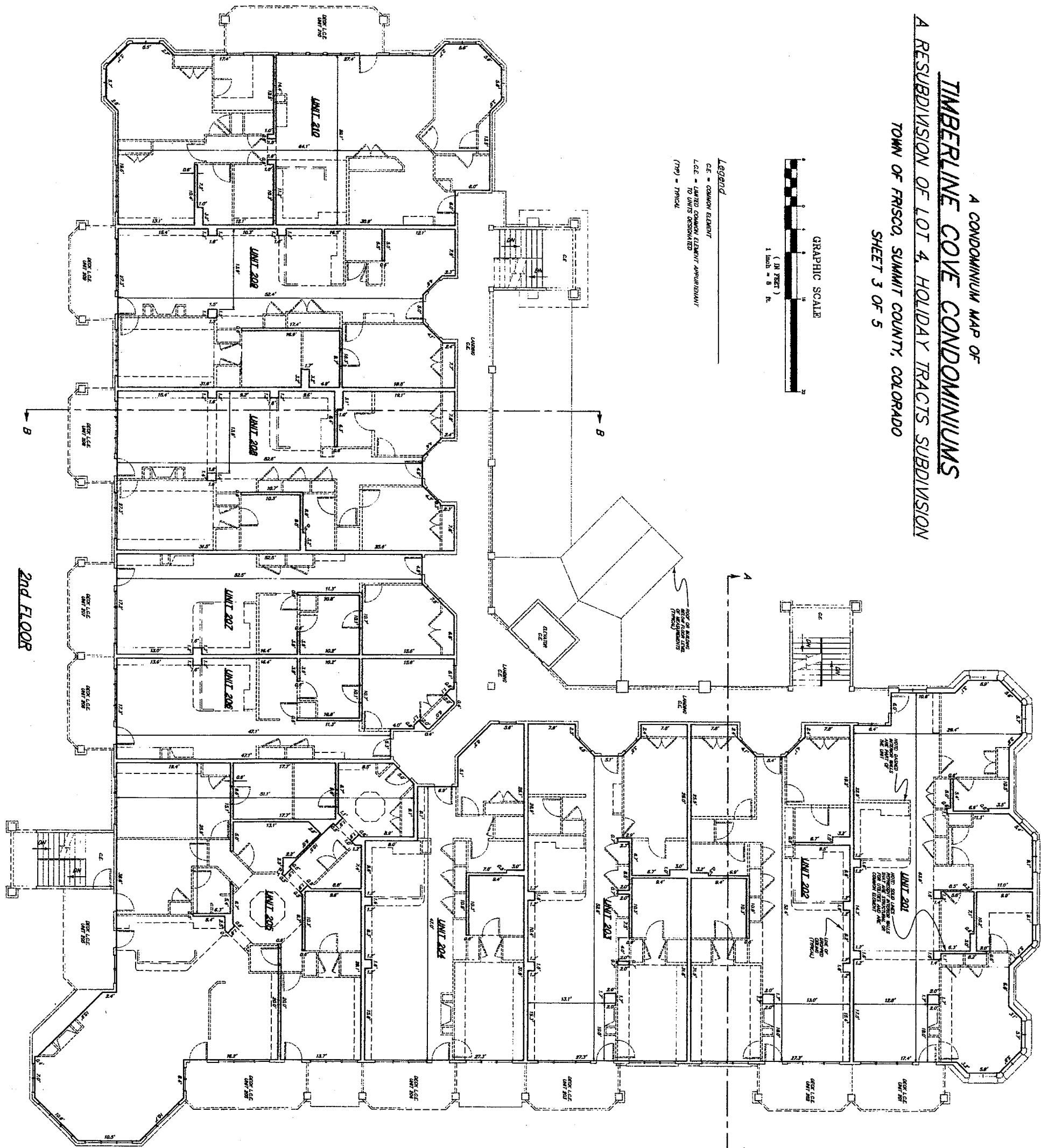
**Legend**  
 C.E. = COMMON ELEMENT  
 L.C.E. = LIMITED COMMON ELEMENT APPOINTMENT  
 TO UNITS DESIGNATED  
 (TYP) = TYPICAL

DATE: 11/11/03	DRAWN BY: J.L.S.	CHECKED BY: J.L.S.
SCALE: AS SHOWN	PROJECT: TIMBERLINE COVE CONDOMINIUMS	SHEET: 2 OF 5
J.L.S. ARCHITECTS, INC. 1000 W. 10TH AVENUE, SUITE 100 DENVER, CO 80202-3100 PHONE: 303.733.1111 FAX: 303.733.1112 WWW: JLSARCHITECTS.COM		

A CONDOMINIUM MAP OF  
**TIMBERLINE COVE CONDOMINIUMS**  
 A RESUBDIVISION OF LOT 4, HOLIDAY TRACTS SUBDIVISION  
 TOWN OF FRISCO, SUMMIT COUNTY, COLORADO  
 SHEET 3 OF 5



**Legend**  
 CE - COMMON ELEMENT  
 LCE - LIMITED COMMON ELEMENT APPOINTMENT  
 (TH) - TYPICAL

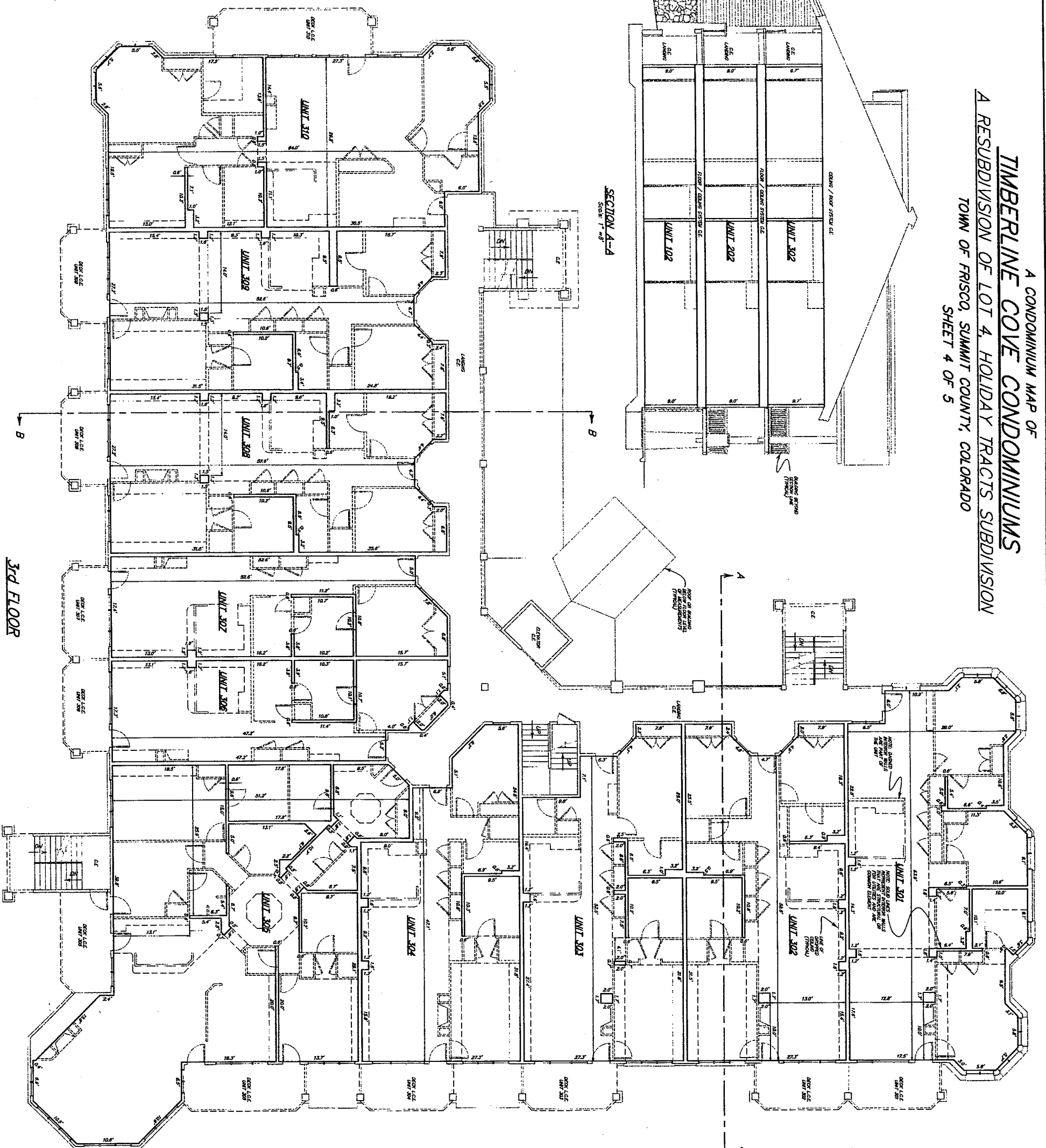


2ND FLOOR

OWNER	DATE	PROJECT
THORNTON	11/15/00	2ND FLOOR
ARCHITECT	DATE	PROJECT
THORNTON	11/15/00	2ND FLOOR
ENGINEER	DATE	PROJECT
THORNTON	11/15/00	2ND FLOOR

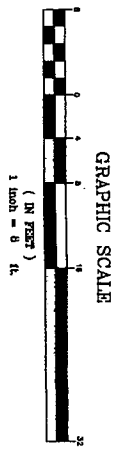
P.O. Box 589  
 Steamboat, CO 80487 970-469-5581

A CONDOMINIUM MAP OF  
**TIMBERLINE COVE CONDOMINIUMS**  
 A RESUBDIVISION OF LOT 4, HOLIDAY TRACTS SUBDIVISION  
 TOWN OF FRISCO, SUMMIT COUNTY, COLORADO  
 SHEET 4 OF 5



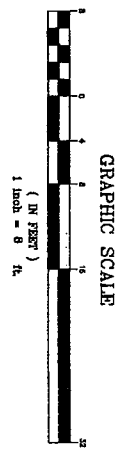
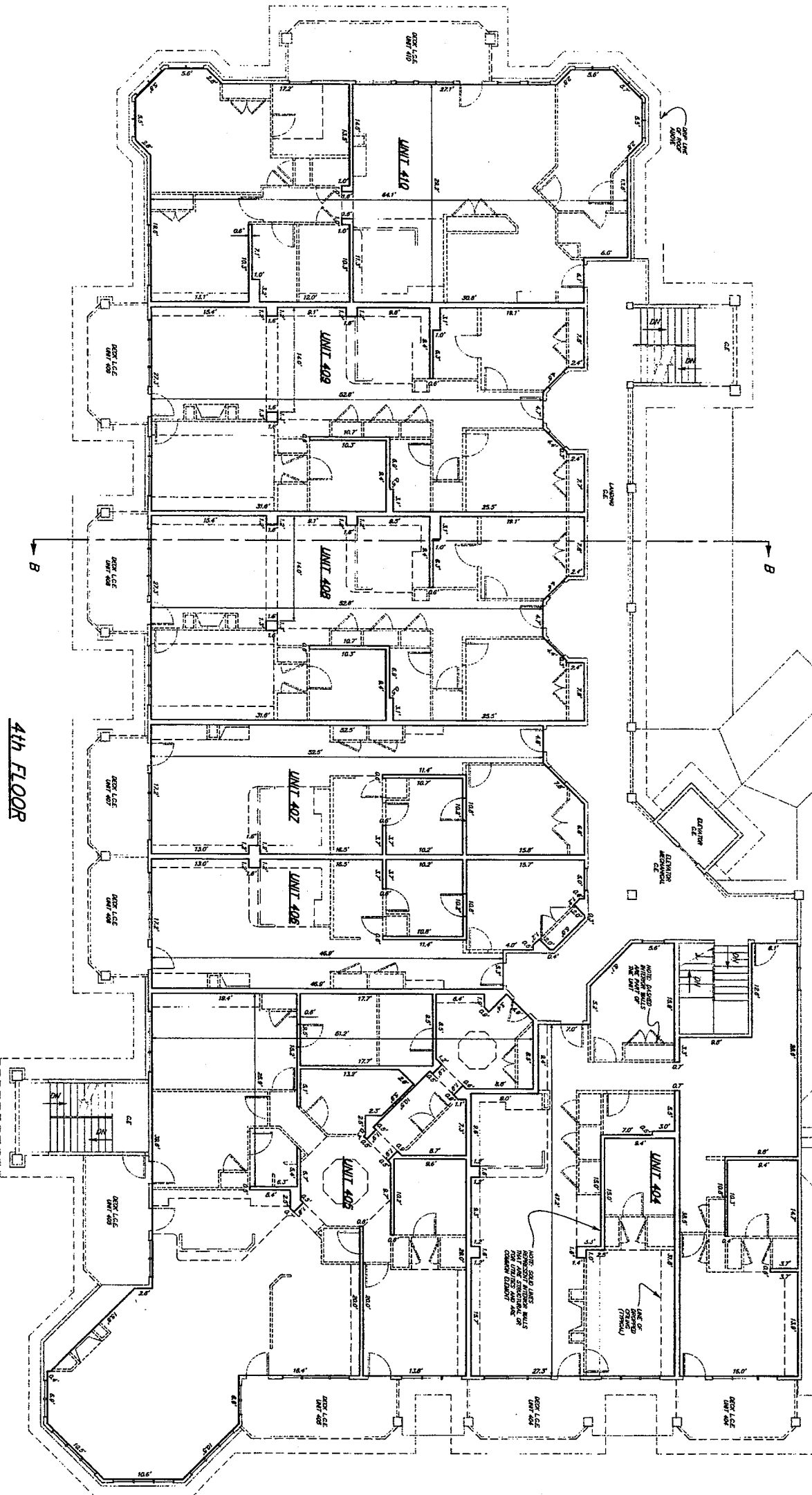
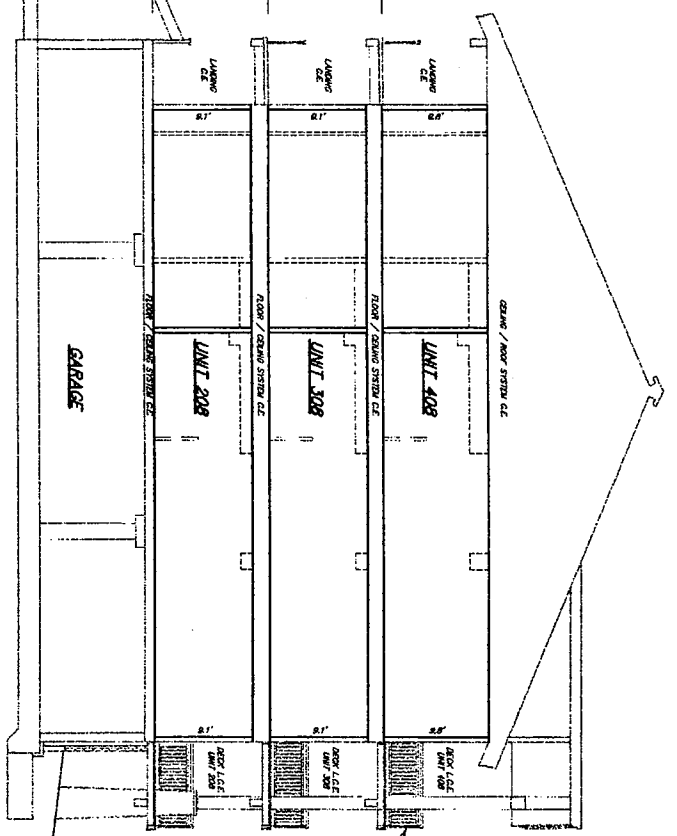
3rd FLOOR

**Legend**  
 C.E. = COMMON ELEMENT  
 L.C. = LIMITED COMMON ELEMENT APPLICABLE TO UNITS DESIGNATED  
 (TP) = TRIPPLE



OWNER	UNIT 1500-C1	PROJECT	1500
OWNER	UNIT 1500-C2	DATE	5.2007
<b>P-A-N-C-B-S-I</b> ENGINEERS & ARCHITECTS P.O. Box 588 Silverthorn, CO 80498 970 468-4281		SHEET	4 OF 5
		DATE	5.2007

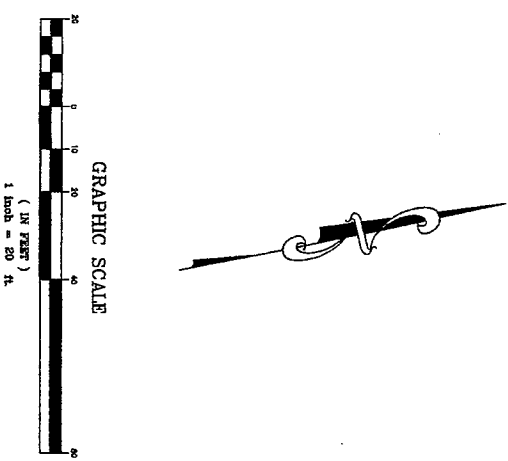
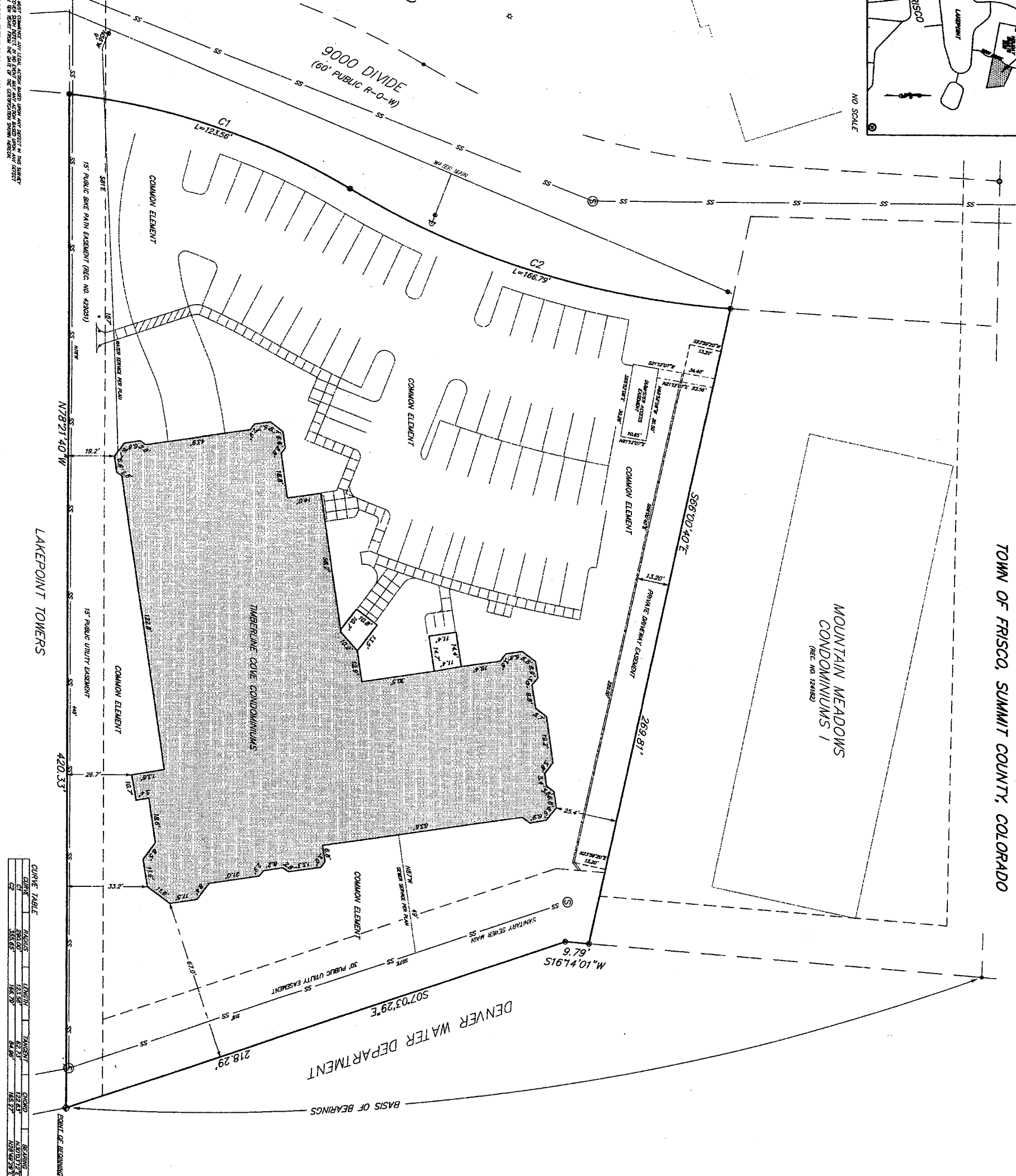
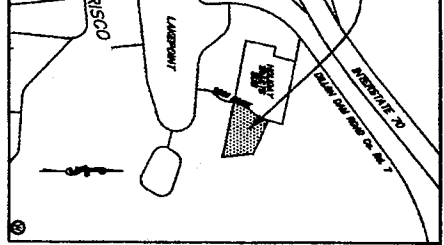
A CONDOMINIUM MAP OF  
**TIMBERLINE COVE CONDOMINIUMS**  
 A RESUBDIVISION OF LOT 4, HOLIDAY TRACTS SUBDIVISION  
 TOWN OF FRISCO, SUMMIT COUNTY, COLORADO  
 SHEET 5 OF 5



**Legend**  
 C.E. = COMMON ELEMENT  
 L.C.E. = LIMITED COMMON ELEMENT APPLICABLE TO UNITS DESIGNATED  
 (TYP) = TYPICAL

Project No.	DATE: 12/24/04	Project Name	12/24/04
Drawn By	J.E.T. & S.W.	Sheet No.	5 OF 5
<b>R-A-N-G-E-B-W-S-J</b> ENGINEERS & ARCHITECTS 420 Bow Street Steamboat, CO 80487 970.459.4281			

A UTILITY MAP OF  
**TIMBERLINE COVE CONDOMINIUMS**  
 A RESUBDIVISION OF LOT 4, HOLIDAY TRACTS SUBDIVISION  
 TOWN OF FRISCO, SUMMIT COUNTY, COLORADO



- LEGEND**
- FOUND REBAR & BELOW PLASTIC CAP (P.S. 10847)
  - FOUND REBAR & BELOW PLASTIC CAP (P.S. 15847)
  - SET REBAR & ALUMINUM CAP (P.S. 80282)
  - ◆ FOUND #4 REBAR
  - ◇ FOUND BRASS CAP SET IN CONC. (P.S. 4974)
  - WATER VALVE
  - SANITARY SEWER MANHOLE
  - PRE HYDRANT
  - SOW
  - ☆ LIGHT POLE

**CURVE TABLE**

CHORD	ARC LENGTH	TANGENT	CHORD BEARING	ARC BEARING
C1	123.56'	62.21'	122.63°	122.63°
C2	166.79'	84.40'	165.17°	165.17°



**R-A-N-C-E-W-E-S-T, INC.**  
 ENGINEERS & SURVEYORS

P.O. Box 589  
 Silverthorne, CO 80499 970-468-0291

Drawn by: [Name] Date: 02/20/07 Project: [Name]  
 Checked by: [Name] Date: 02/20/07 Sheet: 1 of 1

ALL DISTANCES ARE GIVEN AS PER THE RECORD MAP AND SUBJECT TO THE SURVEY  
 BY JOHN W. WEST, JR. IN 1978 AND THE RECORD MAP FROM THAT SURVEY.