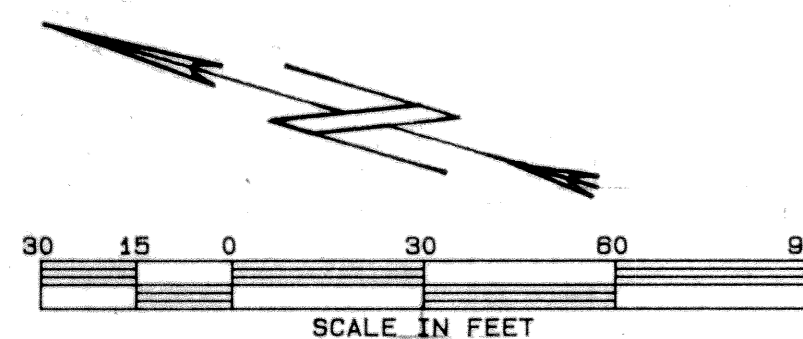
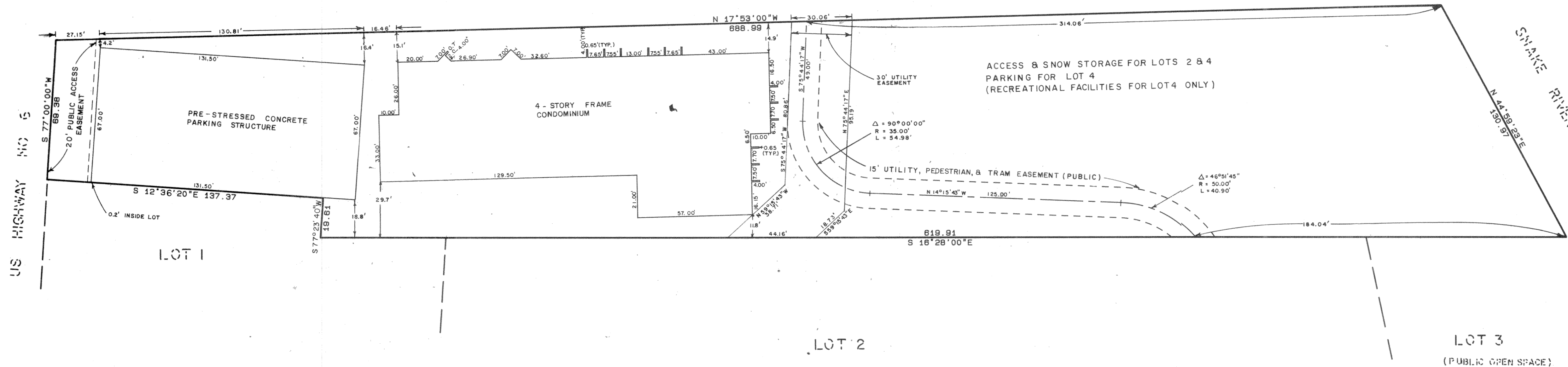


CONDOMINIUM MAP FOR
SNOWDANCE MANOR CONDOMINIUMS
 LOT 4, SNOWDANCE P.U.D. AMENDED,
 SUMMIT COUNTY, COLORADO

UNPLATTED 198/383



- G.C.E. GENERAL COMMON ELEMENT
- L.C.E. LIMITED COMMON ELEMENT
- Ⓢ FIREPLACE (L.C.E.)

ALL INTERIOR WALLS ARE 0.39 FEET THICK UNLESS OTHERWISE NOTED.

EL. = ELEVATION: BASED ON U.S.C. AND S.S. DATUM BENCHMARK DISC DESIGNATED Y 289, LOCATED IN THE TOP OF THE NORTH HEADWALL WHERE THE ORD GRANDE DITCH CROSSES U.S. HIGHWAY NO. 6.

SURVEYOR'S CERTIFICATE

I, RICHARD A. BACKLUND, BEING A REGISTERED LAND SURVEYOR IN THE STATE OF COLORADO DO HEREBY CERTIFY THAT THIS CONDOMINIUM MAP FOR SNOWDANCE MANOR CONDOMINIUMS SHOWING THE BUILDING LOCATIONS AND IMPROVEMENTS, UNIT DESIGNATIONS, DIMENSIONS AND ELEVATIONS ALL OBTAINED AFTER SUBSTANTIAL COMPLETION, ACCURATELY DEPICTS THE LAYOUT, MEASUREMENTS AND LOCATION OF ALL IMPROVEMENTS KNOWN AS SNOWDANCE MANOR CONDOMINIUMS, LOCATED ON LOT 4, SNOWDANCE P.U.D. AMENDED, AS FILED FOR RECORD IN THE OFFICE OF THE CLERK AND RECORDER OF SUMMIT COUNTY, COLORADO.

DATED THIS 21ST DAY OF July, 1983.
Richard A. Backlund
 RICHARD A. BACKLUND, COLORADO L.S. NO. 10847

OWNER'S CERTIFICATE

THE DECLARANT, SNOWDANCE MANOR INC., A COLORADO CORPORATION, BEING THE OWNER OF THE HEREIN DESCRIBED REAL PROPERTY, DOES HEREBY CERTIFY THAT THIS CONDOMINIUM MAP FOR SNOWDANCE MANOR CONDOMINIUMS HAS BEEN PREPARED PURSUANT TO THE PURPOSES STATED IN THE CONDOMINIUM DECLARATION FOR SNOWDANCE MANOR CONDOMINIUMS DATED _____, 1983, AND FILED FOR RECORD UNDER RECEPTION NO. _____ IN THE OFFICE OF THE SUMMIT COUNTY CLERK AND RECORDER.

SNOWDANCE MANOR INC., A COLORADO CORPORATION.
David T. Watts
 DAVID T. WATTS, PRESIDENT
Dene C. Hurlburt
 DENE C. HURLBURT, SECRETARY

ACKNOWLEDGEMENT

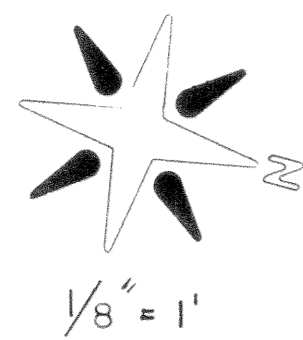
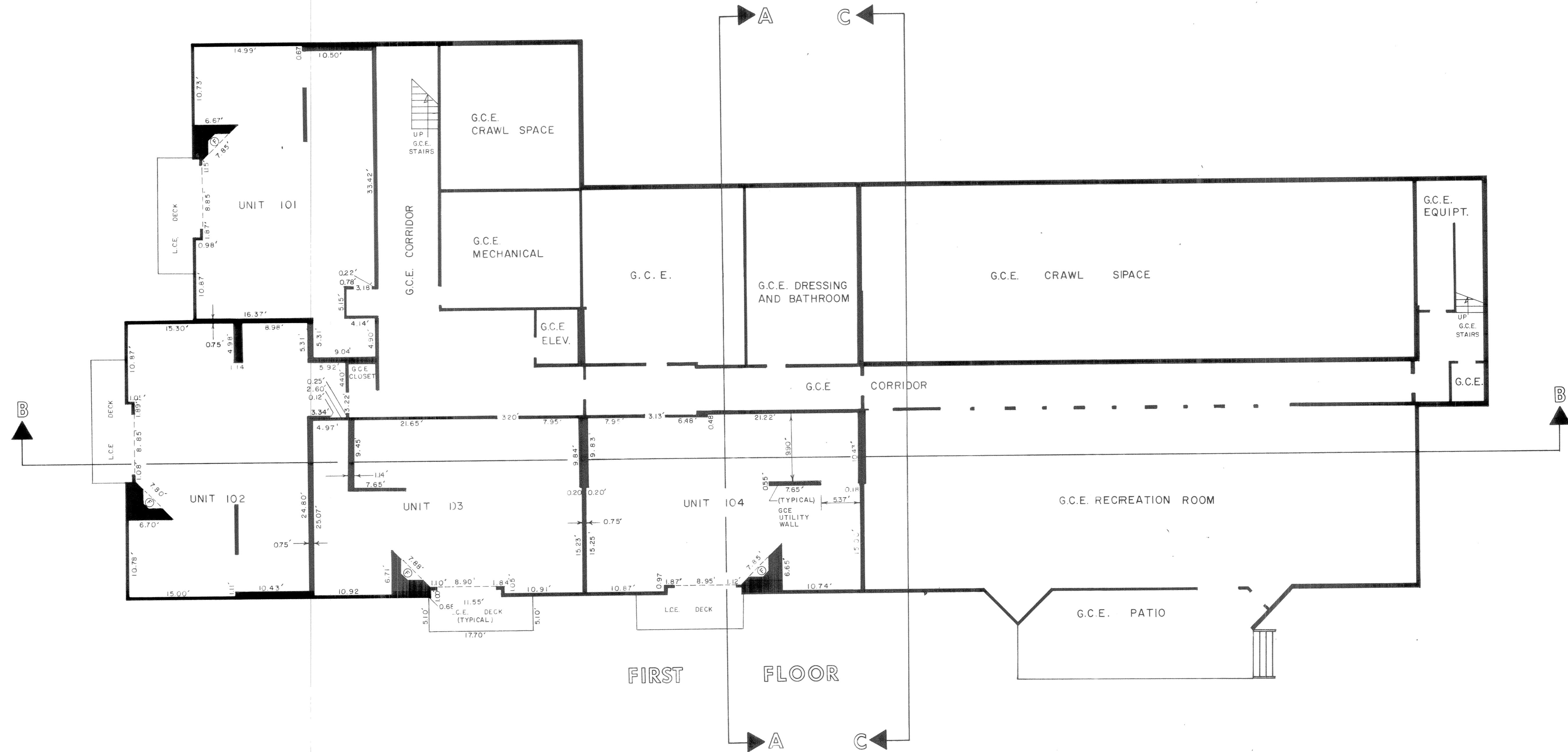
STATE OF COLORADO } ss
 COUNTY OF SUMMIT }
 THE FOREGOING OWNER'S CERTIFICATE WAS ACKNOWLEDGED BEFORE ME THIS 21ST DAY OF July, 1983 BY DAVID T. WATTS AS PRESIDENT AND DENE C. HURLBURT AS SECRETARY OF SNOWDANCE MANOR INC., A COLORADO CORPORATION. WITNESS MY HAND AND OFFICIAL SEAL.
James Baird
 NOTARY PUBLIC
 ADDRESS 111 Skiff Hill
 (505 207)
 Breckenridge, CO 80424
 1-20-86
 MY COMMISSION EXPIRES

RECORDER'S ACCEPTANCE

THIS CONDOMINIUM MAP HAS BEEN ACCEPTED FOR FILING IN THE OFFICE OF THE SUMMIT COUNTY CLERK AND RECORDER ON THIS 11TH DAY OF July, 1983, AT 2:00 P.M. AND DULY FILED FOR RECORD UNDER RECEPTION NO. 24930.
Colleen Richmond
 SUMMIT COUNTY CLERK AND RECORDER
Deanne R. Peterson
 DEPUTY



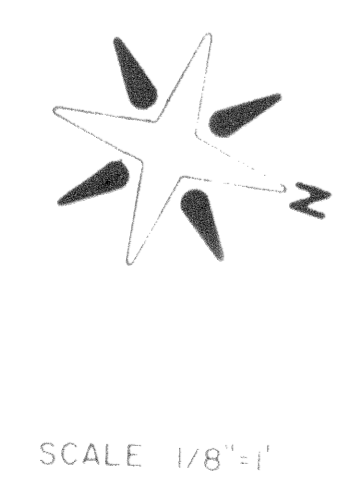
CONDOMINIUM MAP FOR SNOWDANCE MANOR CONDOMINIUMS



CONDOMINIUM MAP FOR SNOWDANCE MANOR CONDOMINIUMS

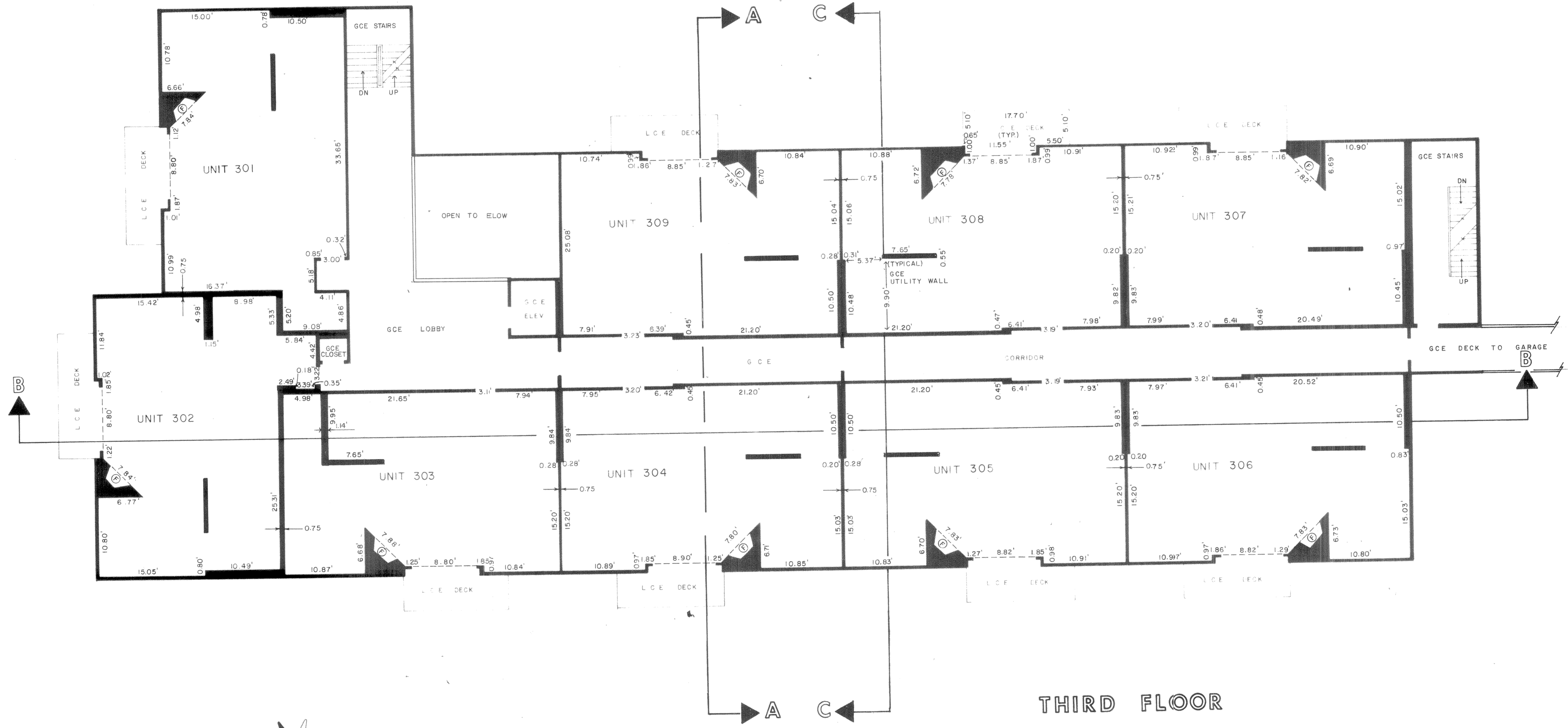


SECOND FLOOR

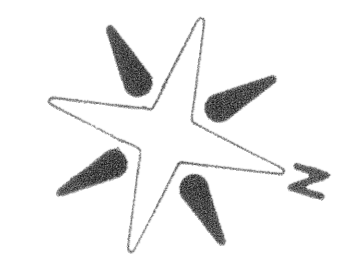


192010 25930

CONDOMINIUM MAP FOR SNOWDANCE MANOR CONDOMINIUMS

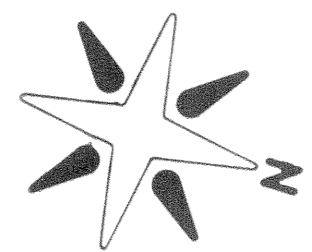
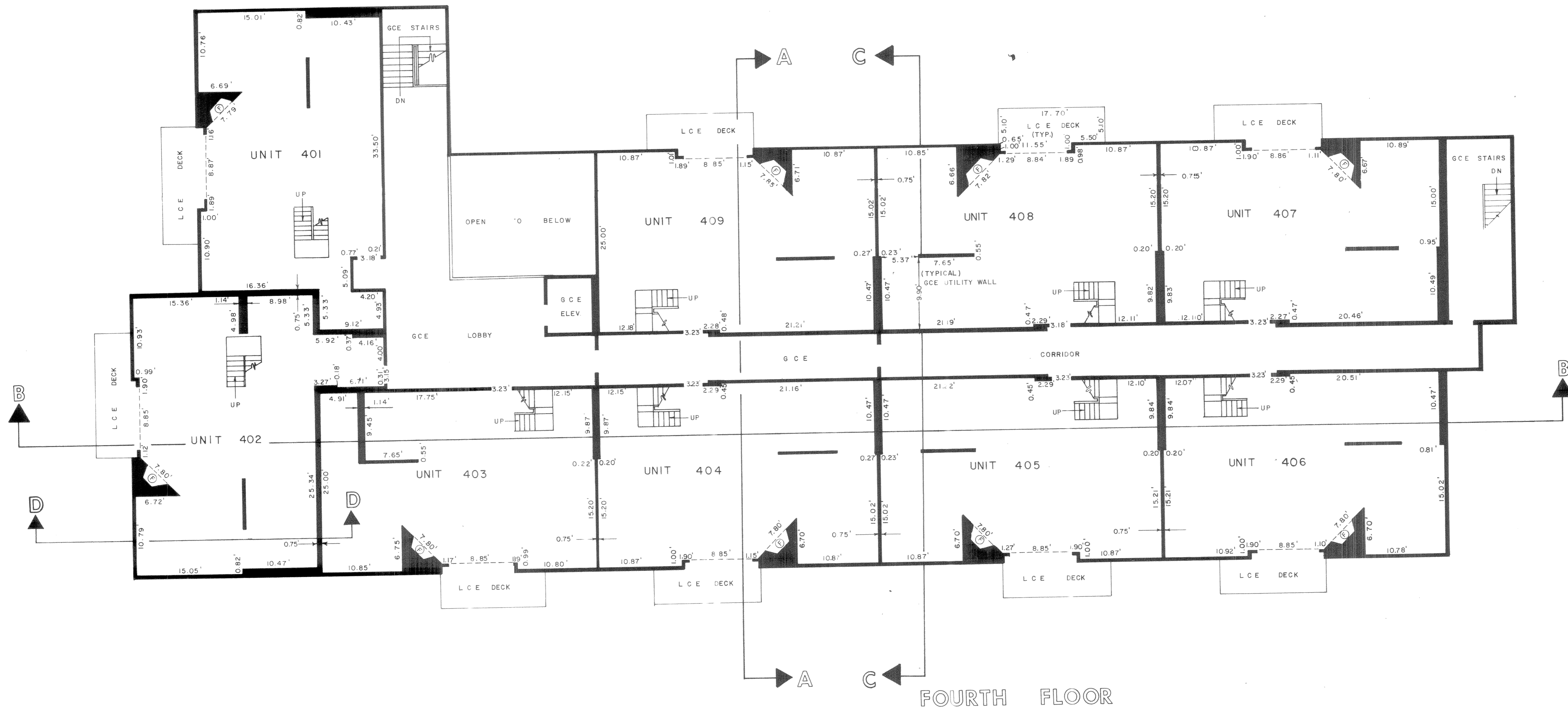


THIRD FLOOR



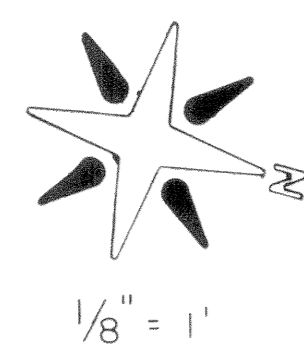
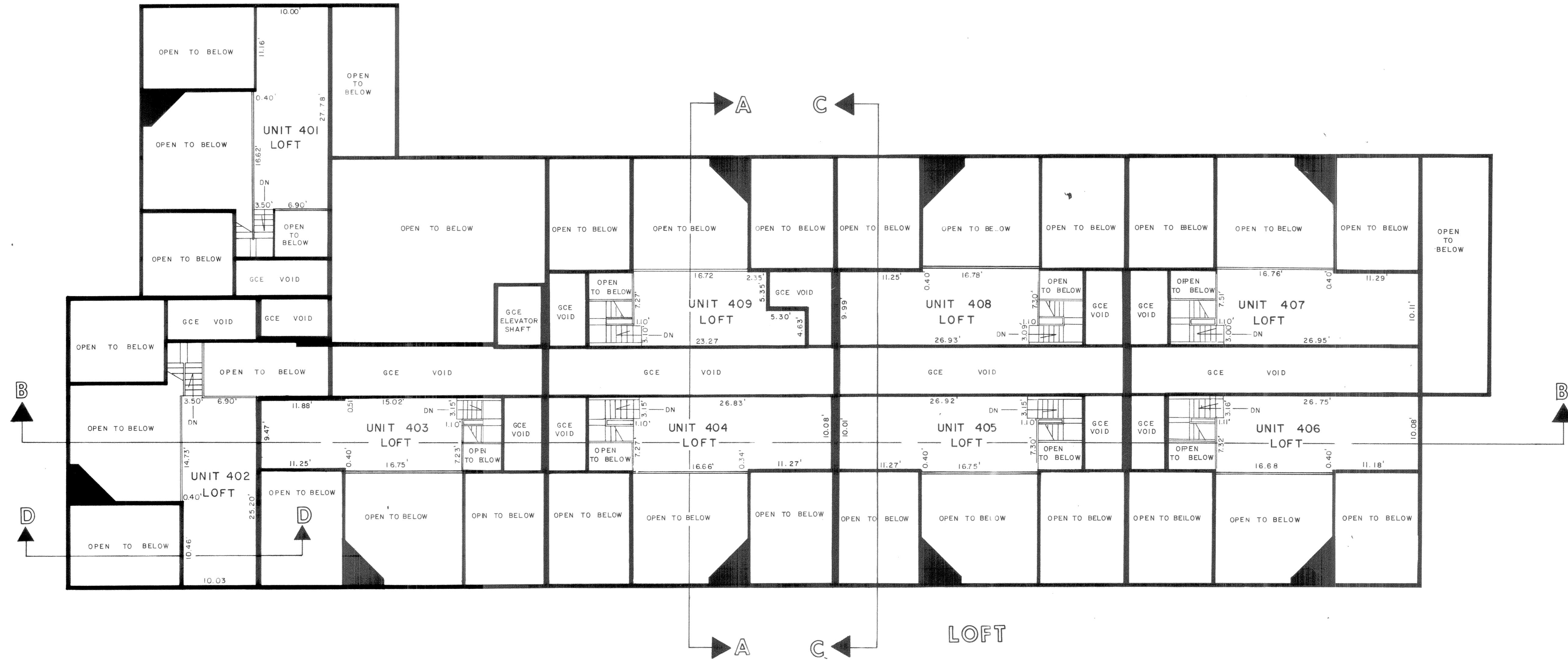
SCALE 1/8"=1'

CONDOMINIUM MAP FOR SNOWDANCE MANOR CONDOMINIUMS

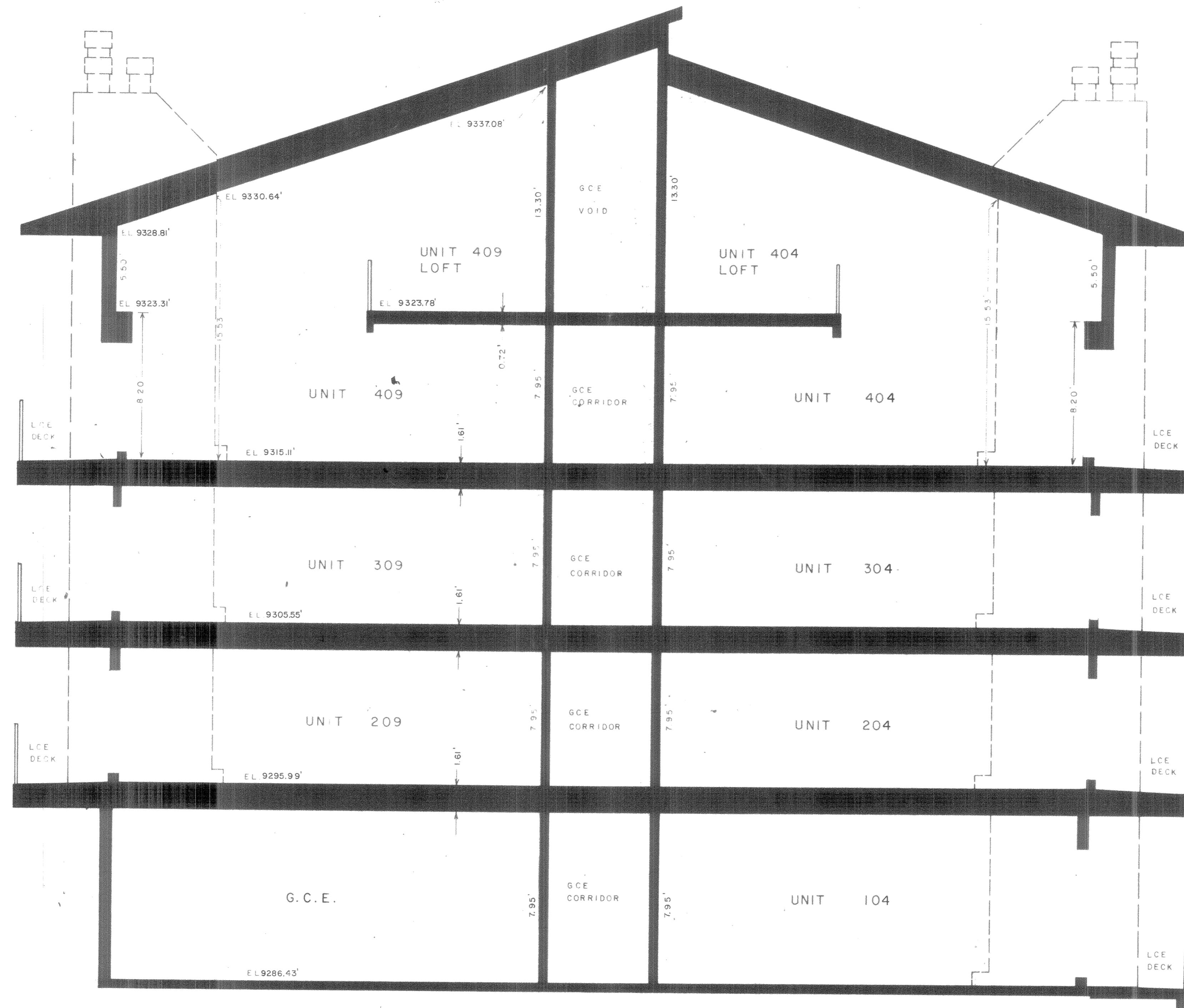


SCALE 1/8"=1'

CONDOMINIUM MAP FOR SNOWDANCE MANOR CONDOMINIUMS

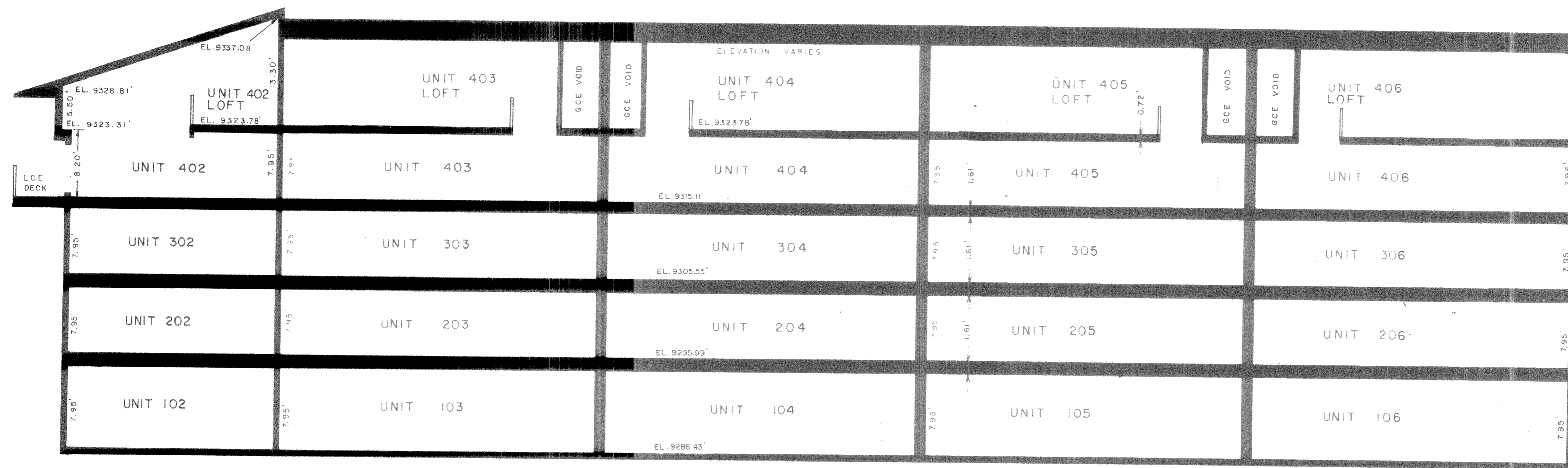


SNOWDANCE MANOR CONDOMINIUMS



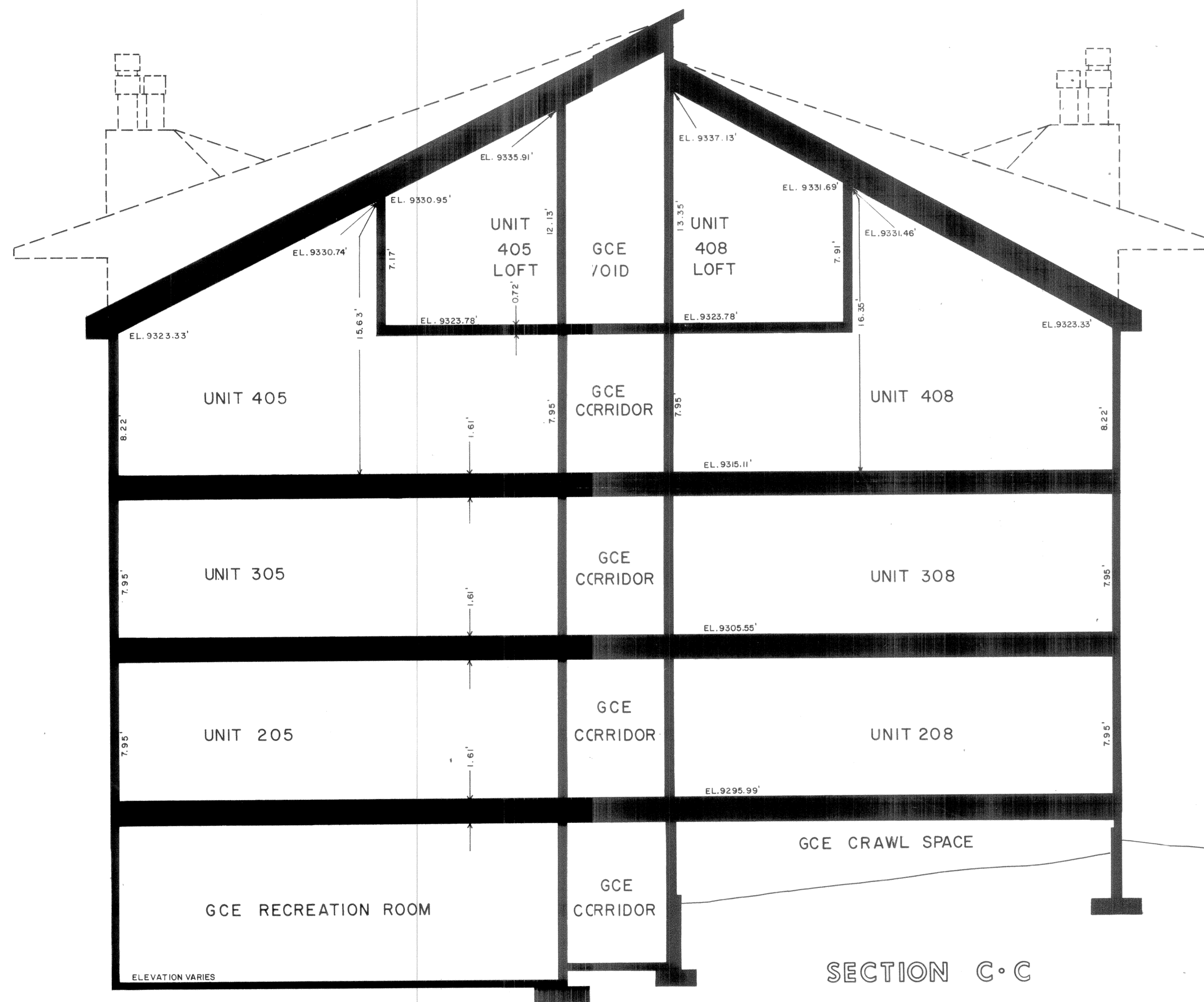
SECTION A-A

CONDOMINIUM MAP FOR SNOWDANCE MANOR CONDOMINIUMS

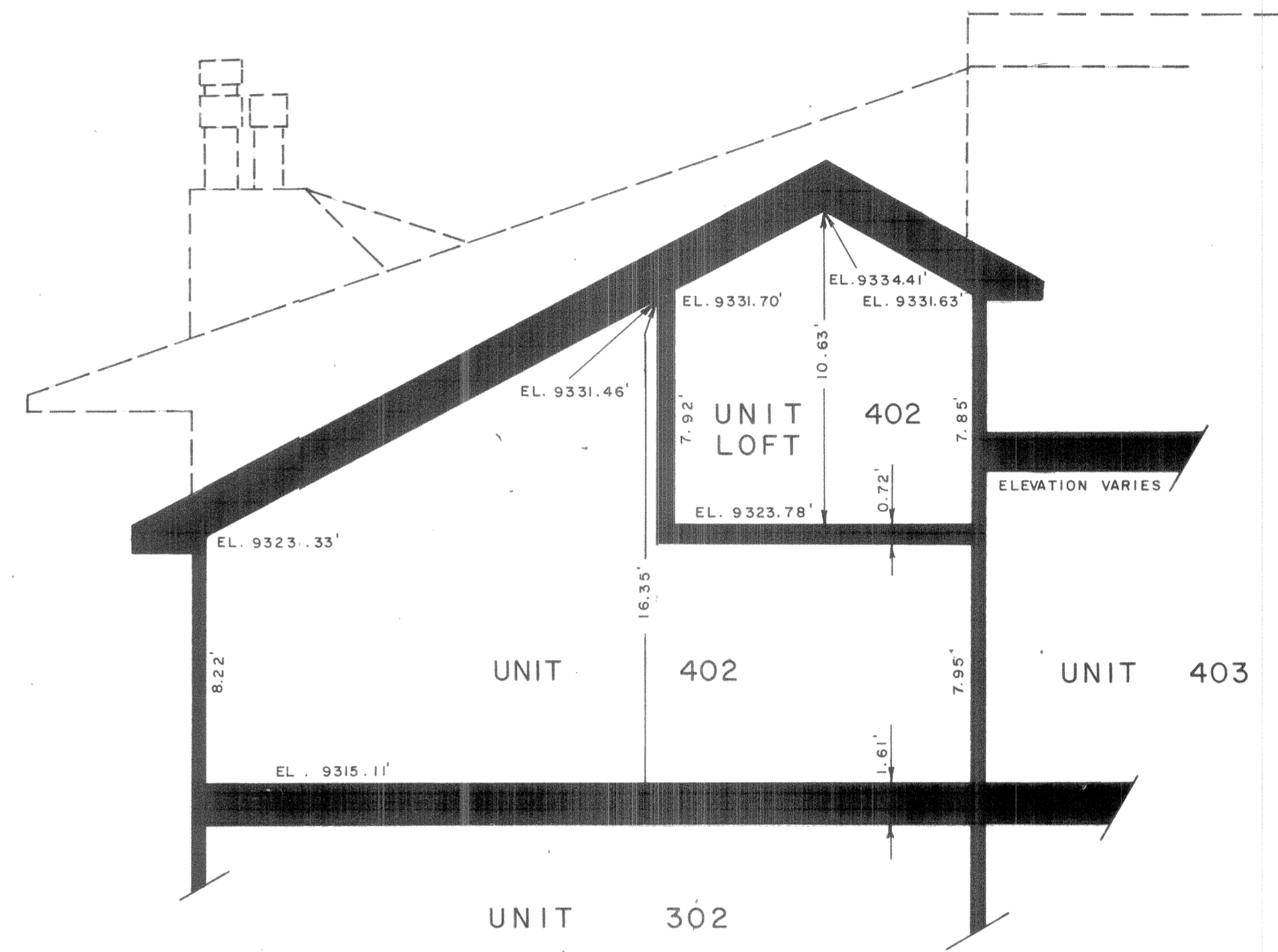


SECTION B-B

CONDOMINIUM MAP FOR SNOWDANCE MANOR CONDOMINIUMS



SECTION C-C

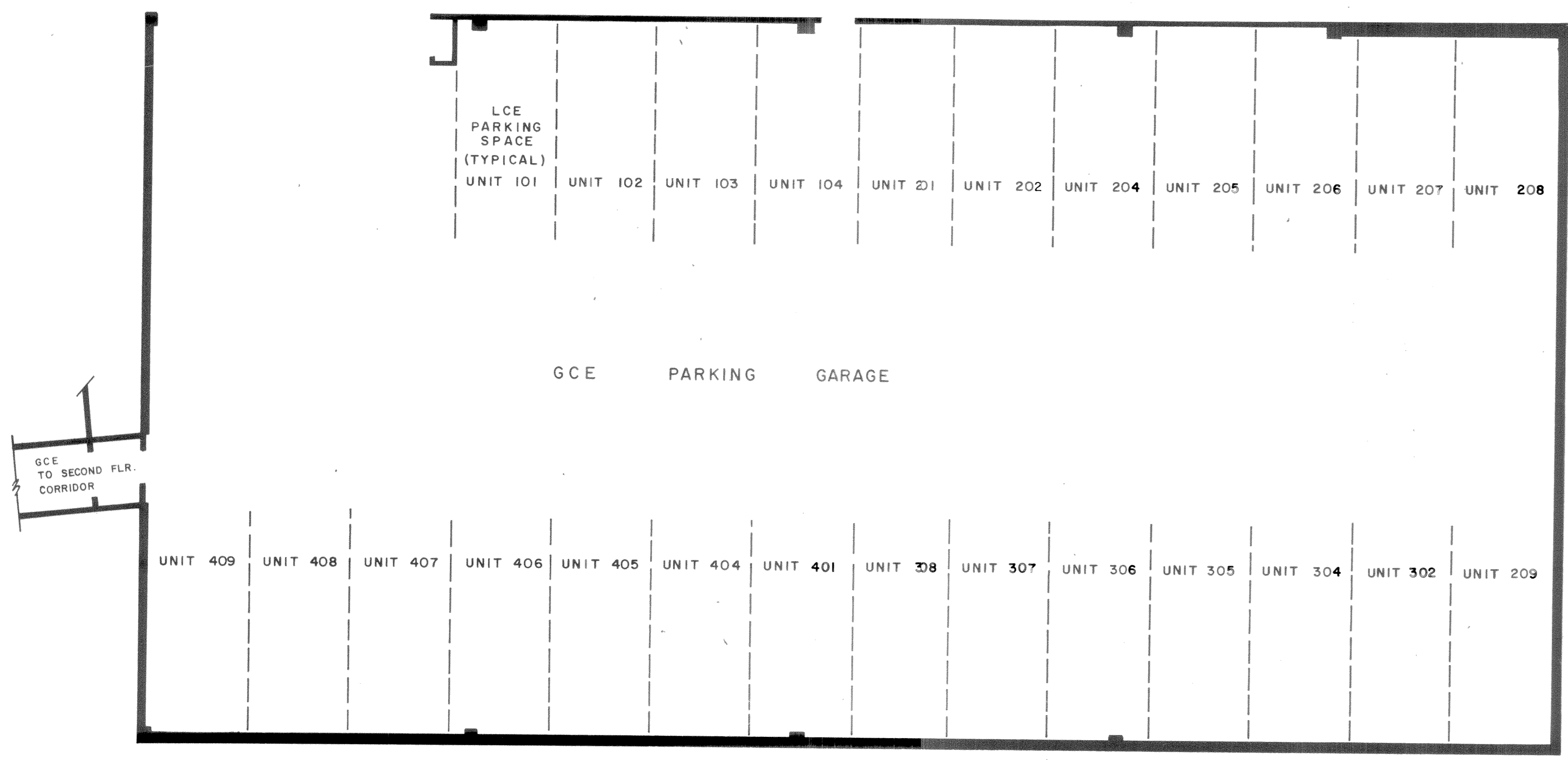


SECTION D-D

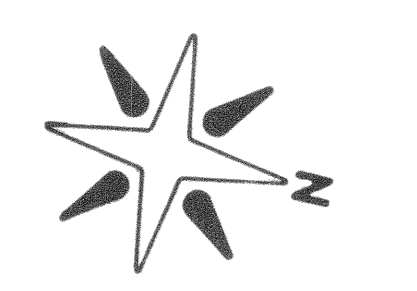
SCALE 1/4" = 1'

SHEET 9 OF 10

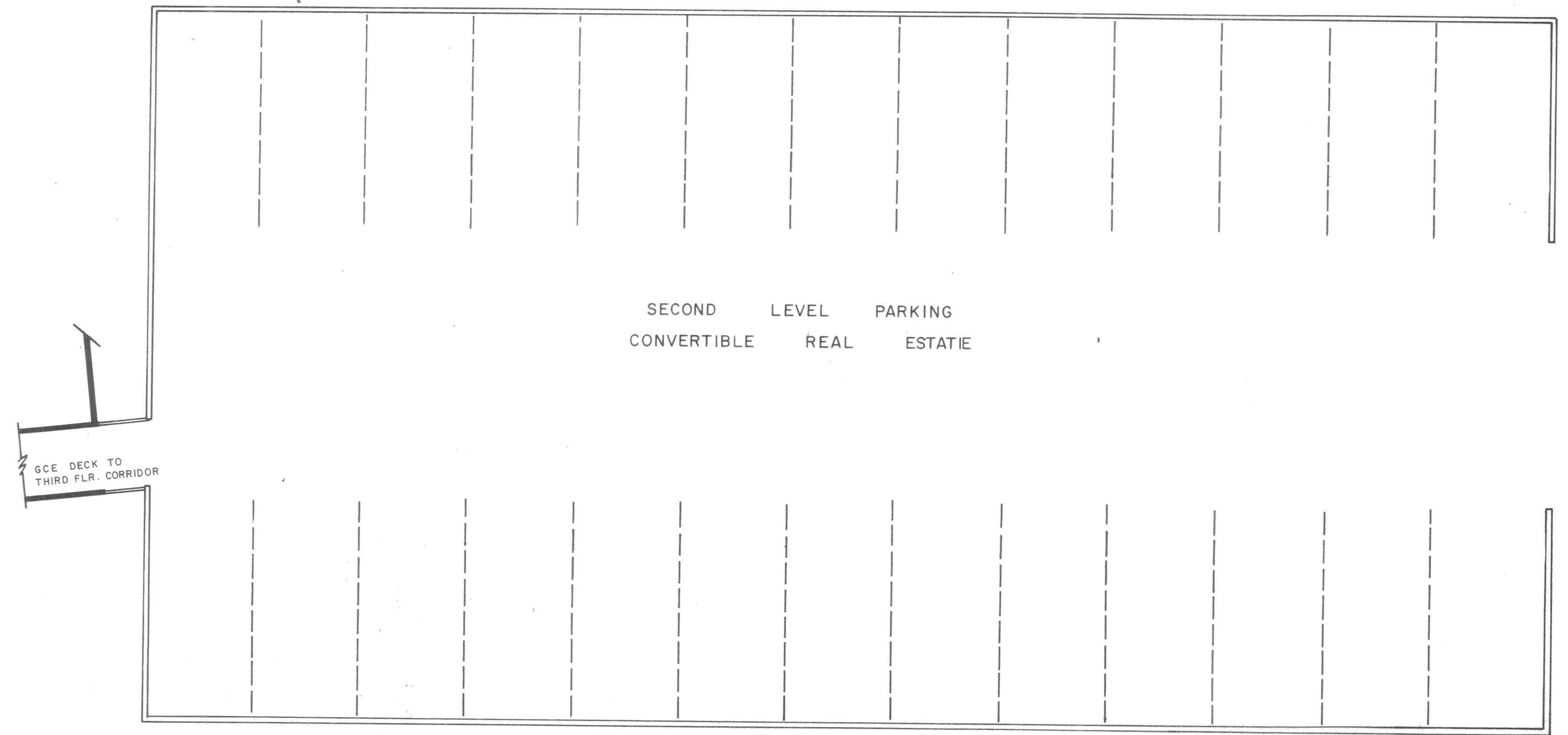
CONDOMINIUM MAP FOR
SNOWDANCE MANOR CONDOMINIUMS



FIRST LEVEL PARKING



SCALE 1/8" = 1'



SECOND LEVEL PARKING

Pg. 10 of 10 25930