

**THE HIDEAWAY TOWNHOUSES SUBDIVISION
 SECOND FILING - FIRST AMENDMENT**
 A REPEAT OF BLOCK 2, OUTLOT "A", HIDEAWAY TOWNHOUSES SUBDIVISION SECOND FILING
 TOWN OF SILVERTHORNE, SUMMIT COUNTY, COLORADO



- LEGEND:**
- 1. LOT NUMBER & AREA
 - 2. TRACT NUMBER & AREA
 - 3. BLOCK NUMBER & AREA
 - 4. SUBDIVISION BOUNDARIES
 - 5. EASEMENTS
 - 6. UTILITY LINES
 - 7. DRIVEWAYS
 - 8. DRIVEWAYS
 - 9. DRIVEWAYS
 - 10. DRIVEWAYS

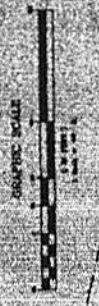


SECOND AMENDMENT TO THE HIDEAWAY TOWNHOUSES SUBDIVISION
 A RE-PLAN OF BLOCK 3, FIRST AMENDMENT TO THE HIDEAWAY TOWNHOUSES SUBDIVISION
 TOWN OF SILVERTHORNE, SUMMIT COUNTY, COLORADO



LEGEND
 - - - - - Proposed 2nd Amendment
 - - - - - Proposed 1st Amendment
 - - - - - Proposed 3rd Amendment
 - - - - - Proposed 4th Amendment
 - - - - - Proposed 5th Amendment
 - - - - - Proposed 6th Amendment
 - - - - - Proposed 7th Amendment
 - - - - - Proposed 8th Amendment
 - - - - - Proposed 9th Amendment
 - - - - - Proposed 10th Amendment

GOLF COURSE PARADISE



EAGLES NEST SUBDIVISION
 FILING NO. 7, PHASE 7
 LOT 1, BLOCK 1

EAGLES NEST SUBDIVISION
 FILING NO. 2, PHASE 7

DATE	DESCRIPTION	BY
11/15/00	1st Amendment	Dave King
11/15/00	2nd Amendment	Dave King
11/15/00	3rd Amendment	Dave King
11/15/00	4th Amendment	Dave King
11/15/00	5th Amendment	Dave King
11/15/00	6th Amendment	Dave King
11/15/00	7th Amendment	Dave King
11/15/00	8th Amendment	Dave King
11/15/00	9th Amendment	Dave King
11/15/00	10th Amendment	Dave King

DEVELOPER'S CERTIFICATE
 I, the undersigned, being the owner of the above described premises, do hereby certify that the same are in accordance with the provisions of the Colorado Subdivision Map Act, Chapter 45, Article 3, of the Colorado Revised Statutes, and that the same are being recorded for the purpose of creating a new subdivision of land.

PLANNING COMMISSION
 The Planning Commission of the Town of Silverthorne, Summit County, Colorado, has reviewed the proposed subdivision and has found it to be in accordance with the Comprehensive Zoning Ordinance and the Subdivision Map Act.

PLANNING COMMISSION
 The Planning Commission of the Town of Silverthorne, Summit County, Colorado, has reviewed the proposed subdivision and has found it to be in accordance with the Comprehensive Zoning Ordinance and the Subdivision Map Act.

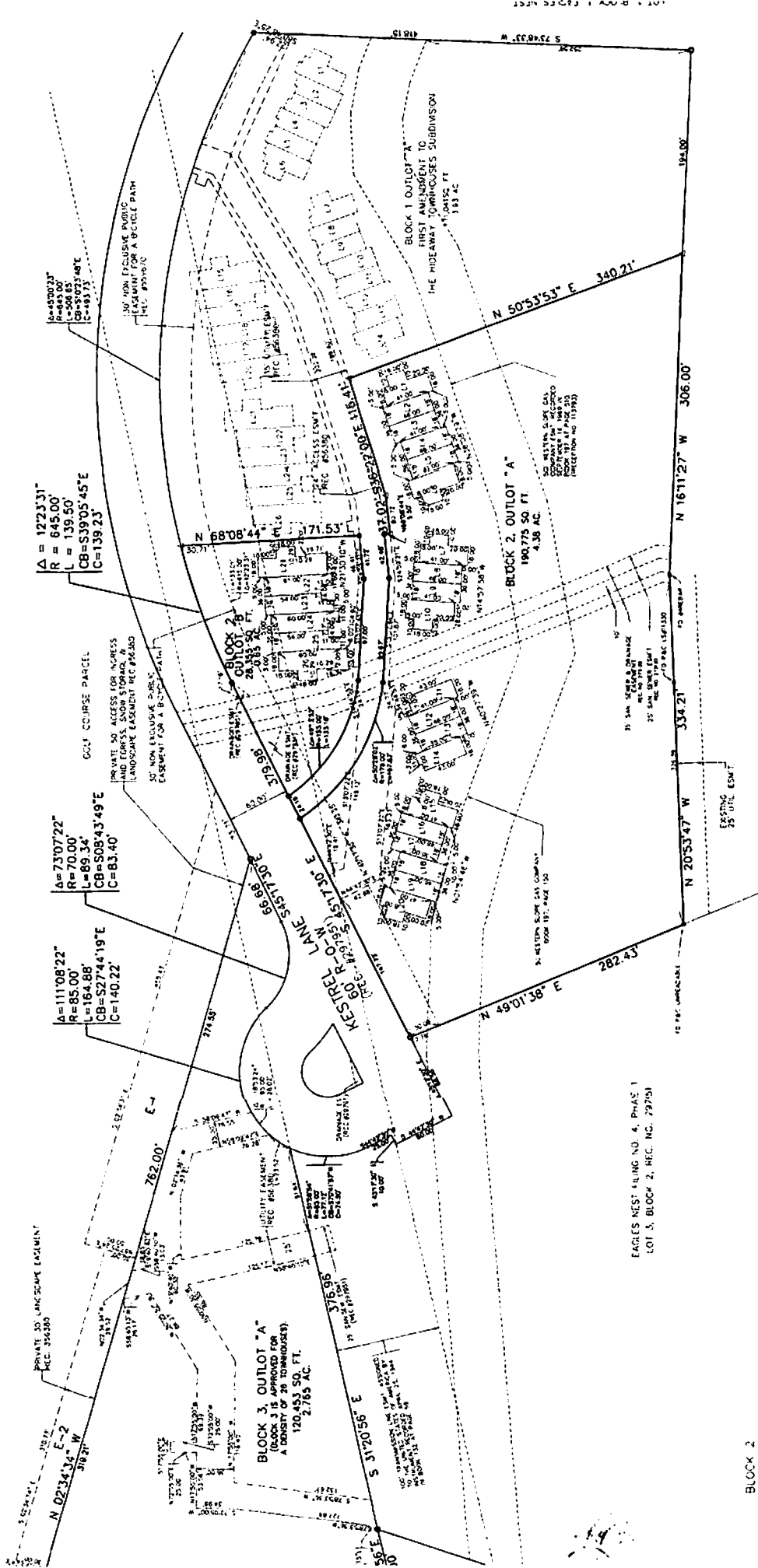
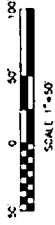
PLANNING COMMISSION
 The Planning Commission of the Town of Silverthorne, Summit County, Colorado, has reviewed the proposed subdivision and has found it to be in accordance with the Comprehensive Zoning Ordinance and the Subdivision Map Act.

EAGLES NEST SUBDIVISION
 FILING NO. 4, LOT 1, BLOCK 2

HIDEAWAY TOWNHOUSES SUBDIVISION SECOND FILING

BEING A REPLAT OF BLOCK 2, HIDEAWAY TOWNHOUSES SUBDIVISION,
TOWN OF SILVERTHORNE, COUNTY OF SUMMIT, STATE OF COLORADO

SHEET 2 OF 2



BLOCK 2

ALL LOTS IN BLOCK 2 ARE FROM THE SOUTHEAST CORNER OF BLOCK 2

LOT #	BEARING	DISTANCE
11-16	S 02° 32' 24\"	237.97
11-17	S 02° 32' 24\"	238.94
11-18	S 02° 32' 24\"	239.91
11-19	S 02° 32' 24\"	240.88
11-20	S 02° 32' 24\"	241.85
11-21	S 02° 32' 24\"	242.82
11-22	S 02° 32' 24\"	243.79
11-23	S 02° 32' 24\"	244.76
11-24	S 02° 32' 24\"	245.73
11-25	S 02° 32' 24\"	246.70
11-26	S 02° 32' 24\"	247.67
11-27	S 02° 32' 24\"	248.64
11-28	S 02° 32' 24\"	249.61
11-29	S 02° 32' 24\"	250.58
11-30	S 02° 32' 24\"	251.55
11-31	S 02° 32' 24\"	252.52
11-32	S 02° 32' 24\"	253.49
11-33	S 02° 32' 24\"	254.46
11-34	S 02° 32' 24\"	255.43
11-35	S 02° 32' 24\"	256.40
11-36	S 02° 32' 24\"	257.37
11-37	S 02° 32' 24\"	258.34
11-38	S 02° 32' 24\"	259.31
11-39	S 02° 32' 24\"	260.28
11-40	S 02° 32' 24\"	261.25
11-41	S 02° 32' 24\"	262.22
11-42	S 02° 32' 24\"	263.19
11-43	S 02° 32' 24\"	264.16
11-44	S 02° 32' 24\"	265.13
11-45	S 02° 32' 24\"	266.10
11-46	S 02° 32' 24\"	267.07
11-47	S 02° 32' 24\"	268.04
11-48	S 02° 32' 24\"	269.01
11-49	S 02° 32' 24\"	270.00
11-50	S 02° 32' 24\"	270.97
11-51	S 02° 32' 24\"	271.94
11-52	S 02° 32' 24\"	272.91
11-53	S 02° 32' 24\"	273.88
11-54	S 02° 32' 24\"	274.85
11-55	S 02° 32' 24\"	275.82
11-56	S 02° 32' 24\"	276.79
11-57	S 02° 32' 24\"	277.76
11-58	S 02° 32' 24\"	278.73
11-59	S 02° 32' 24\"	279.70
11-60	S 02° 32' 24\"	280.67
11-61	S 02° 32' 24\"	281.64
11-62	S 02° 32' 24\"	282.61
11-63	S 02° 32' 24\"	283.58
11-64	S 02° 32' 24\"	284.55
11-65	S 02° 32' 24\"	285.52
11-66	S 02° 32' 24\"	286.49
11-67	S 02° 32' 24\"	287.46
11-68	S 02° 32' 24\"	288.43
11-69	S 02° 32' 24\"	289.40
11-70	S 02° 32' 24\"	290.37
11-71	S 02° 32' 24\"	291.34
11-72	S 02° 32' 24\"	292.31
11-73	S 02° 32' 24\"	293.28
11-74	S 02° 32' 24\"	294.25
11-75	S 02° 32' 24\"	295.22
11-76	S 02° 32' 24\"	296.19
11-77	S 02° 32' 24\"	297.16
11-78	S 02° 32' 24\"	298.13
11-79	S 02° 32' 24\"	299.10
11-80	S 02° 32' 24\"	300.07
11-81	S 02° 32' 24\"	301.04
11-82	S 02° 32' 24\"	302.01
11-83	S 02° 32' 24\"	302.98
11-84	S 02° 32' 24\"	303.95
11-85	S 02° 32' 24\"	304.92
11-86	S 02° 32' 24\"	305.89
11-87	S 02° 32' 24\"	306.86
11-88	S 02° 32' 24\"	307.83
11-89	S 02° 32' 24\"	308.80
11-90	S 02° 32' 24\"	309.77
11-91	S 02° 32' 24\"	310.74
11-92	S 02° 32' 24\"	311.71
11-93	S 02° 32' 24\"	312.68
11-94	S 02° 32' 24\"	313.65
11-95	S 02° 32' 24\"	314.62
11-96	S 02° 32' 24\"	315.59
11-97	S 02° 32' 24\"	316.56
11-98	S 02° 32' 24\"	317.53
11-99	S 02° 32' 24\"	318.50
11-100	S 02° 32' 24\"	319.47

- LEGEND**
- FIND MONUMENT AS NEEDED
 - △ FIND P & C P.L.S. #P832
 - ▲ FIND P & C P.L.S. #P832
 - SET P & C P.L.S. #P832

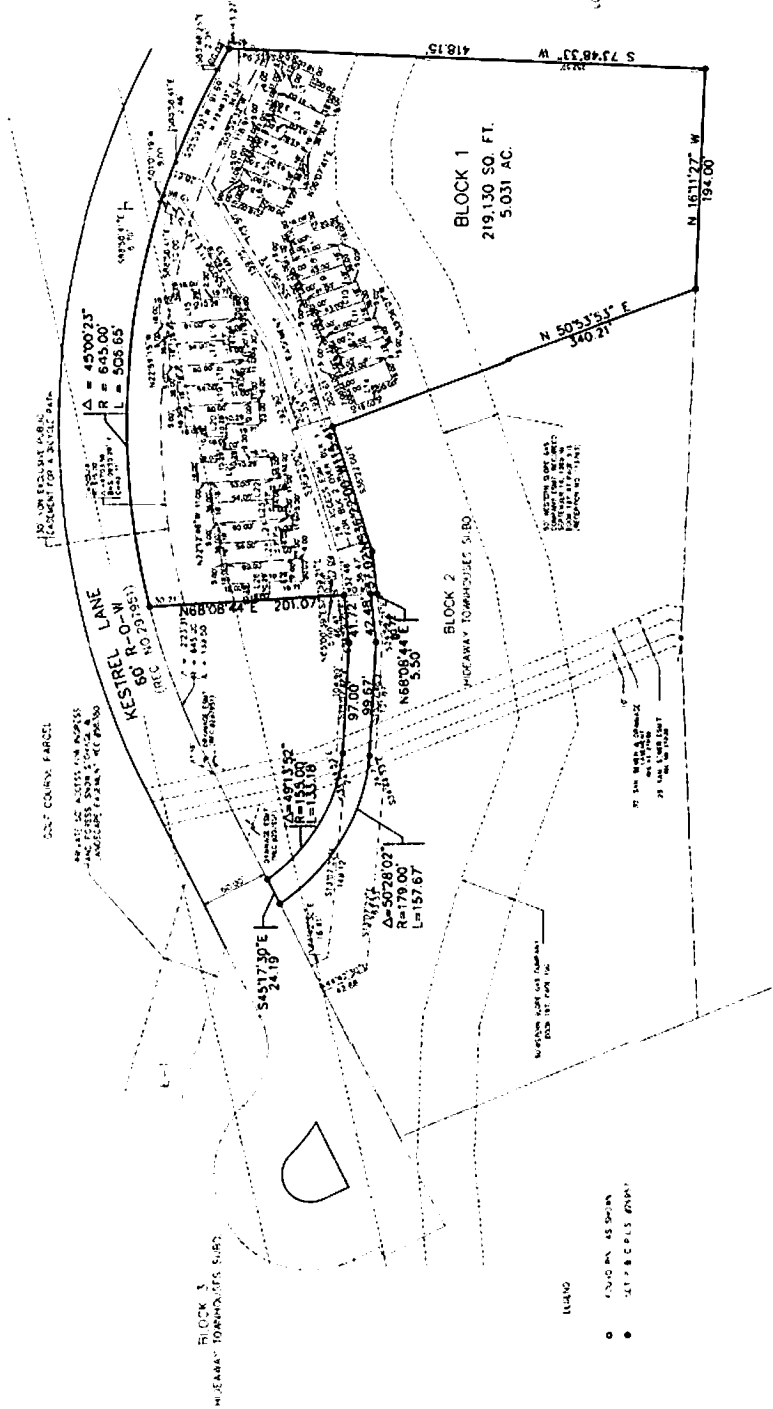
EAGLES NEST FILING NO. 4, PHASE 1
LOT 3, BLOCK 2, REC. NO. 279701

EAGLES NEST FILING NO. 2, PHASE 1
BLOCK 1, REC. NO. 279729

R & R Engineers-Surveyors, Inc.
410 Broadway, Suite 229
Englewood, Colorado 80112
(303) 792-2846

**FIRST AMENDMENT
TO
THE HIDEAWAY TOWNHOUSES SUBDIVISION**
BEING A REPLAT OF BLOCK 1, HIDEAWAY TOWNHOUSES SUBDIVISION,
TOWN OF SILVERTHORNE, COUNTY OF SUMMIT, STATE OF COLORADO

SHEET 2 OF 2



- LEGEND
- EXISTING LOT CORNER
 - SETBACKS (MIN)

LOT CORNER TIES
LOT CORNER IN DIMENSION - C

FILE #	DATE	BY	REVISION
12-1-15	12/1/15	AS	1
12-1-15	12/1/15	AS	2
12-1-15	12/1/15	AS	3
12-1-15	12/1/15	AS	4

BLOCK 1

FILE #	DATE	BY	REVISION
12-1-15	12/1/15	AS	1
12-1-15	12/1/15	AS	2
12-1-15	12/1/15	AS	3
12-1-15	12/1/15	AS	4

ERLES NEXT PLING NO 4 PHASE
LOT 3 BLOCK 2 REC NO 28755

ERLES NEXT PLING NO 2 PHASE 1
BLOCK 1 REC NO 274278

LOT 1, BLOCK 1, ERLES NEXT
SUBDIVISION REC NO 4

