

DECK SKIRTS

For The Hideaway back decks built off the ground leaving a space between the deck and ground, the following construction materials and methods are required:

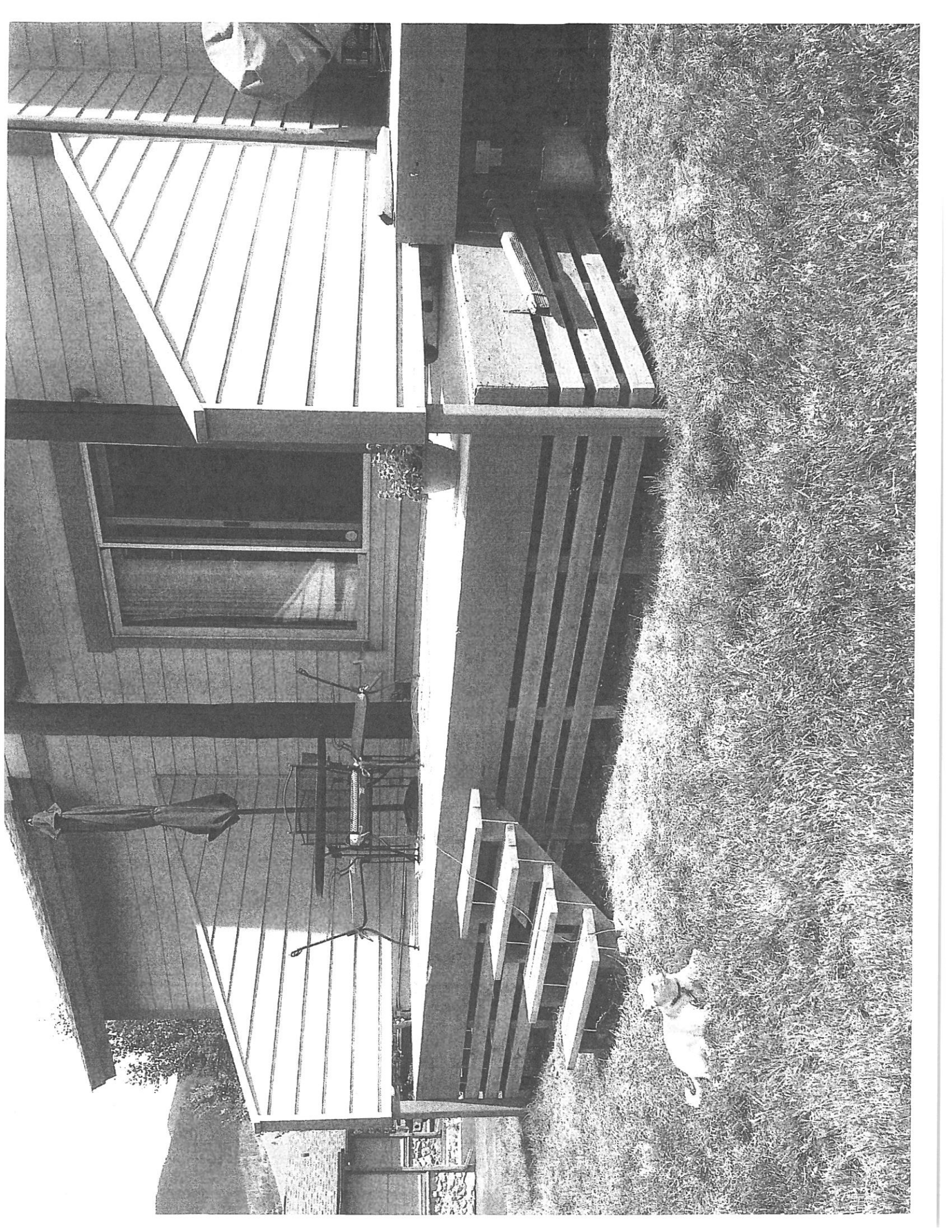
Materials

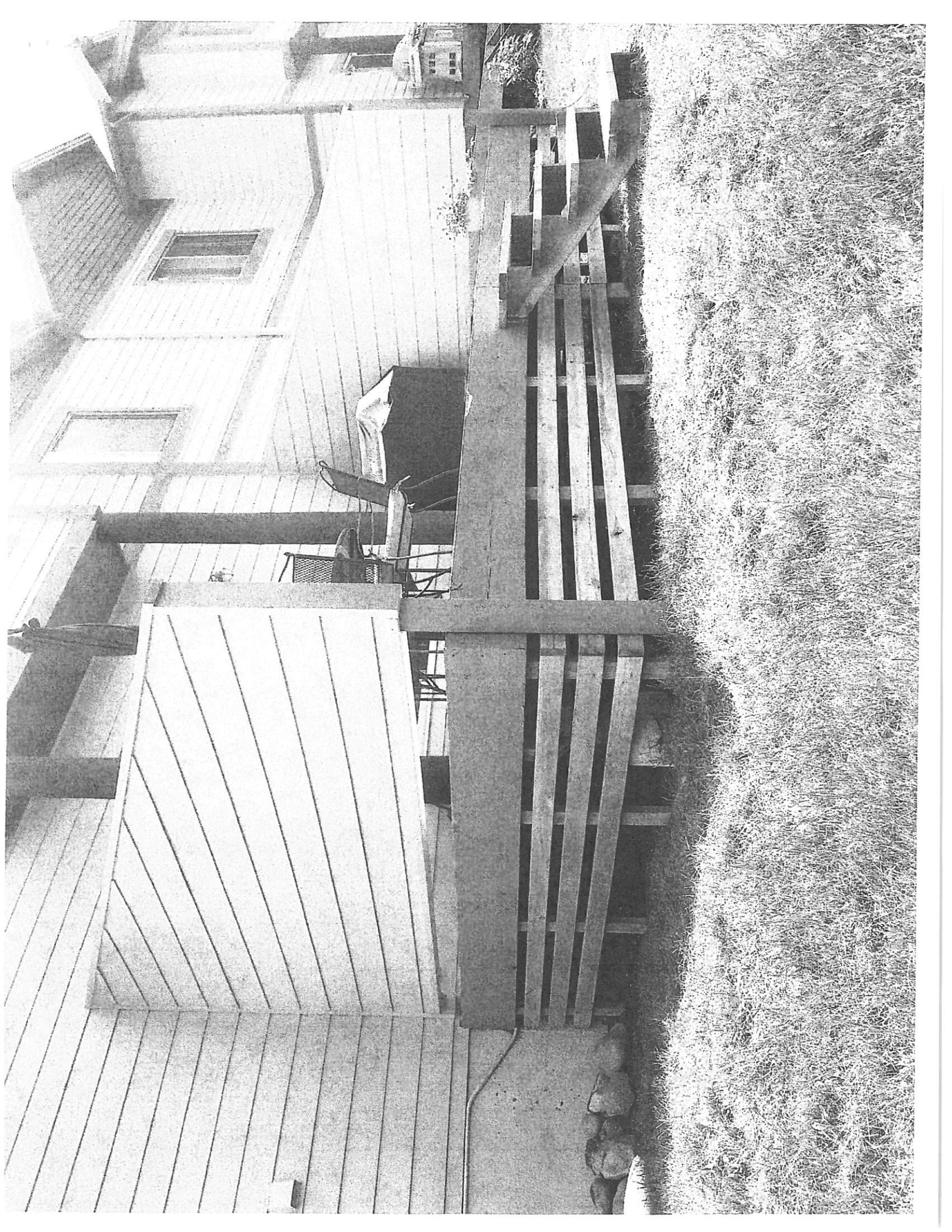
1. Use only pressure-treated 2" x 4"s
2. All boards will be secured by 3" coated deck screws (No nails)
3. River rock must be place at the bottom of the horizontal slat and the ground

Methods

1. 2" x 4" vertical support posts (4 per sides and 6 per front) should be placed at equal intervals on three sides of the deck, secured from under the deck face board into the ground at least 1' deep
2. Each horizontal 2" x 4" should be cut the length of the deck and the width of the deck
3. The number of 2" x 4" horizontal slats depends upon the height of the deck
4. At least 4" should be left between the bottom slat and the ground
5. A 2" gap/space is to be left between each horizontal 2" x 4"
6. All wood must be painted to match deck face boards-usually Hideaway Green.
7. See attached photographs
8. See Unit 330 deck skirt for construction model

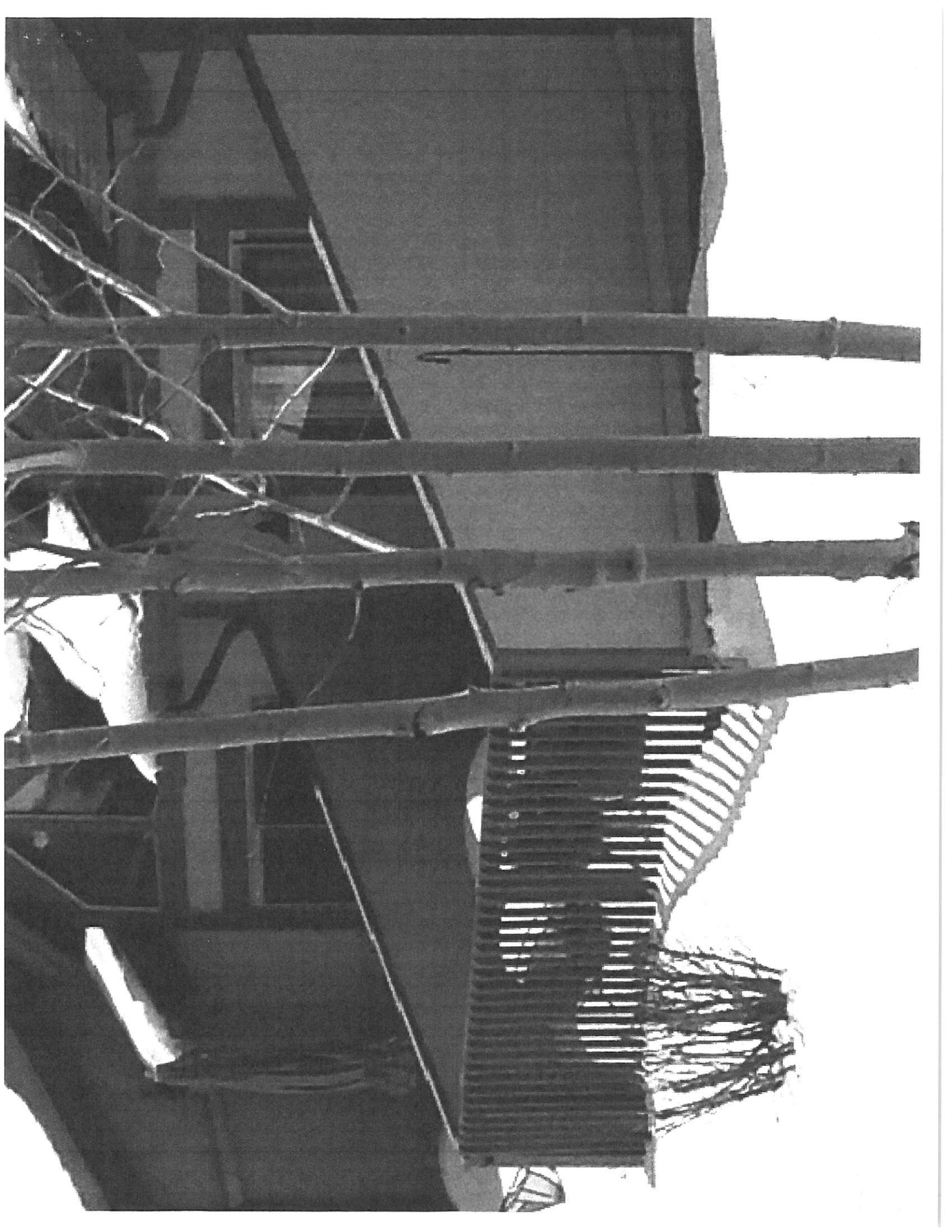


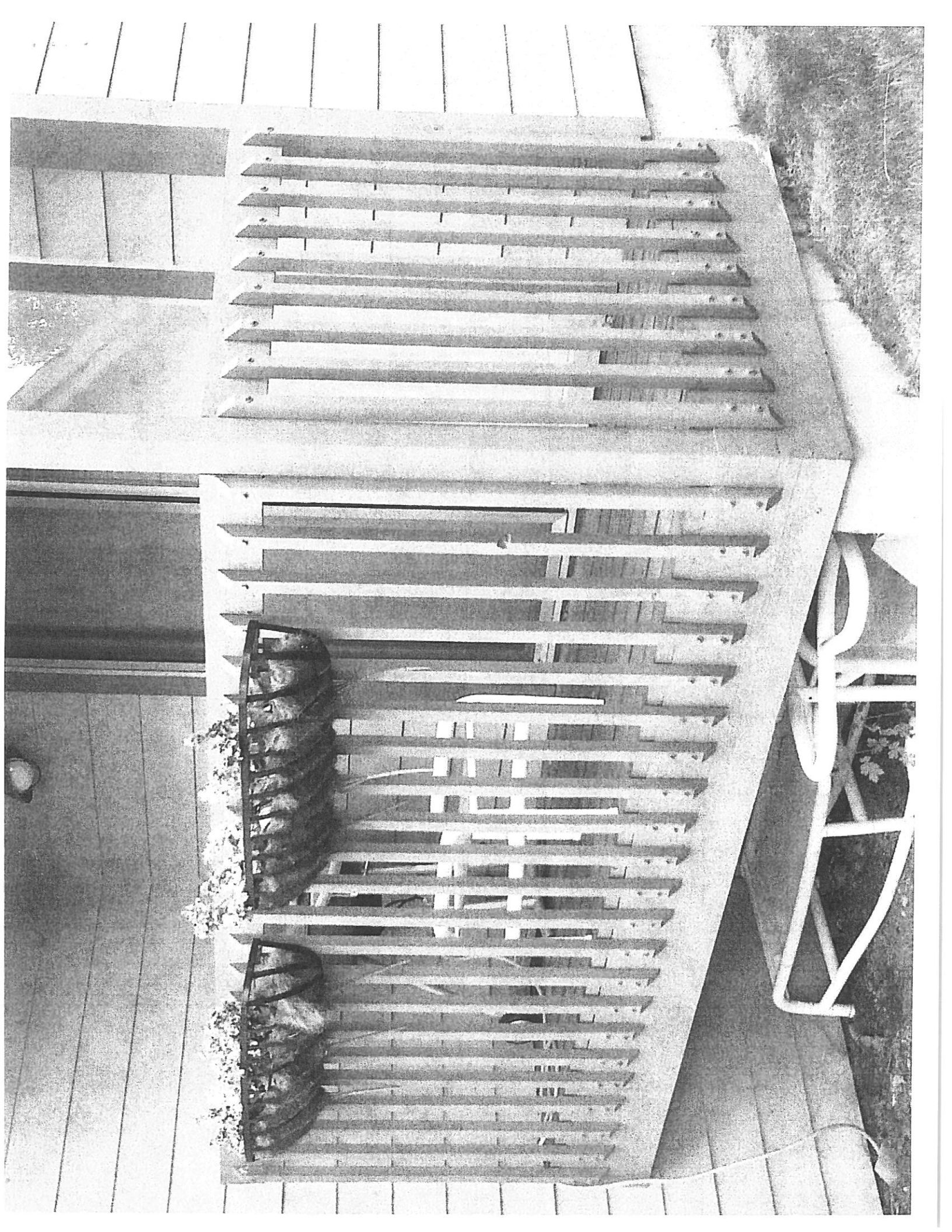




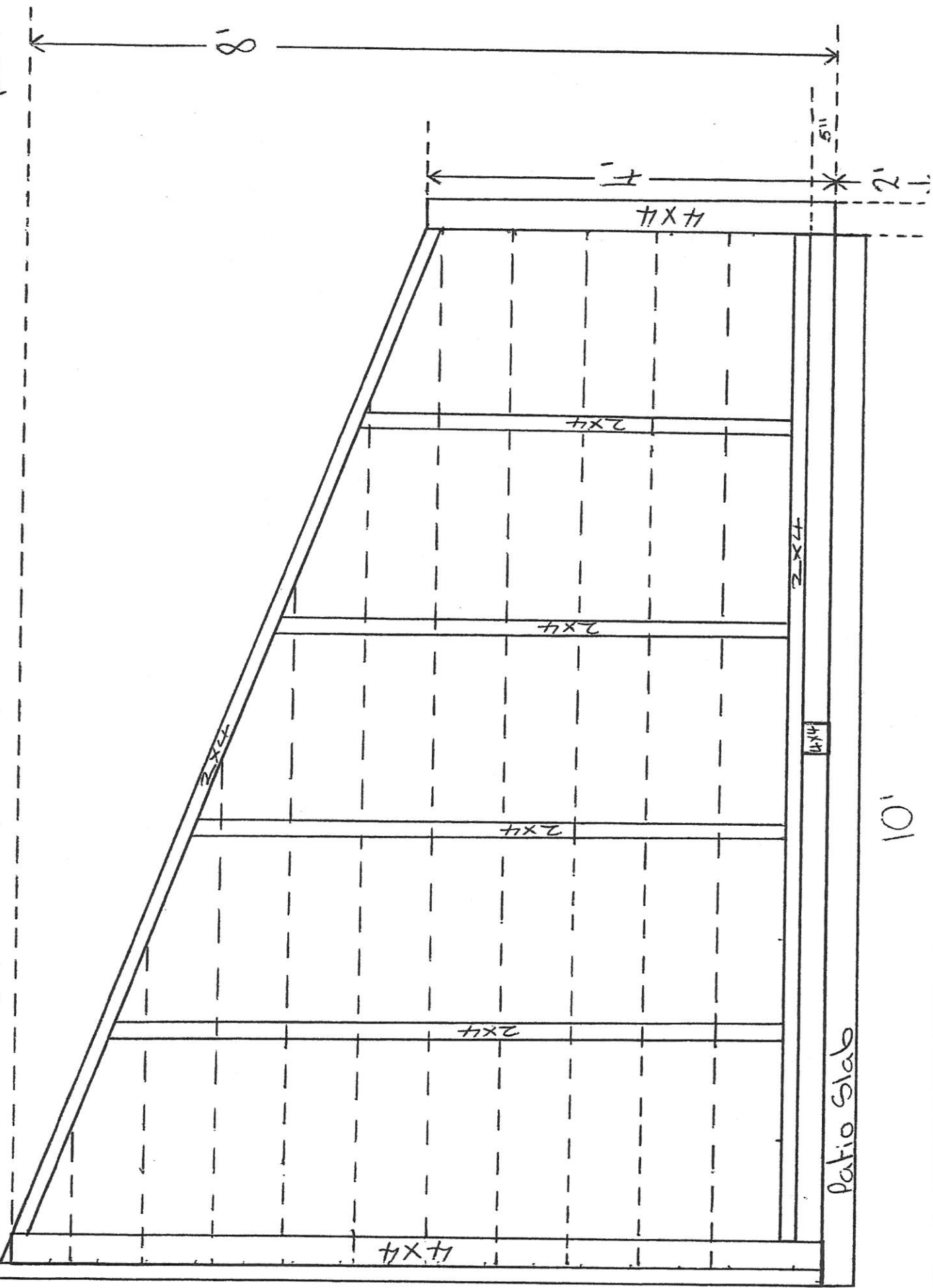
FENCE

Only one type of wooden fence is permitted in The Hideaway. This fence is to be located only at the end of a patio or deck. Fences are to be constructed to match the railings that surround small, second story decks/balconies (See photo). The length of the fence has to fit in between the privacy walls at the end of a deck/patio (See photo). The fence is to be 4' tall (from the patio/deck surface), approximately 18' wide with one gate situated at the left (facing the rear of the townhome) end of the fence. The top and bottom horizontal boards (4" x 6") are to be supported by four 4" x 4" posts set 2' into the ground and secured in cement. All wood must be pressure-treated. Vertical slats must be 2" x 2"s, miter-cut at the top and bottom (See photo), and secured to the two horizontal 4" x 6"s with two (one top, one bottom) 3"lag screws and washers in pre-drilled holes. Vertical slats are to be 4" apart. The gate must be 4' tall and 36" wide, with one diagonal support set inside the gate frame. Two "gate hinges" must secure the gate to the fence. The gate must match the fence concerning vertical slats. The fence and gate must be painted Hideaway Green. For model comparisons, see any second story deck/balcony railing, or Unit 273. See photographs.





Privacy wall constructed on back patio, attached from corner of house to post concreted in ground. Materials - pressure treated lumbar consisting of 4x4, 2x6 x 2x4, siding to match house and top plate/ end plates painted to match house. Note top plate/ end plate not present.



House

Patio Slab

10'

Privacy wall erected to match house and others in same area/neighborhood.



Top plate 2x6, painted to match house

Siding to match house
Painted to match house

End plate 2x6, painted to match house

Support post attached to house 4x4

Support post 4x4

5" gap

End post 4x4, concreted in ground

