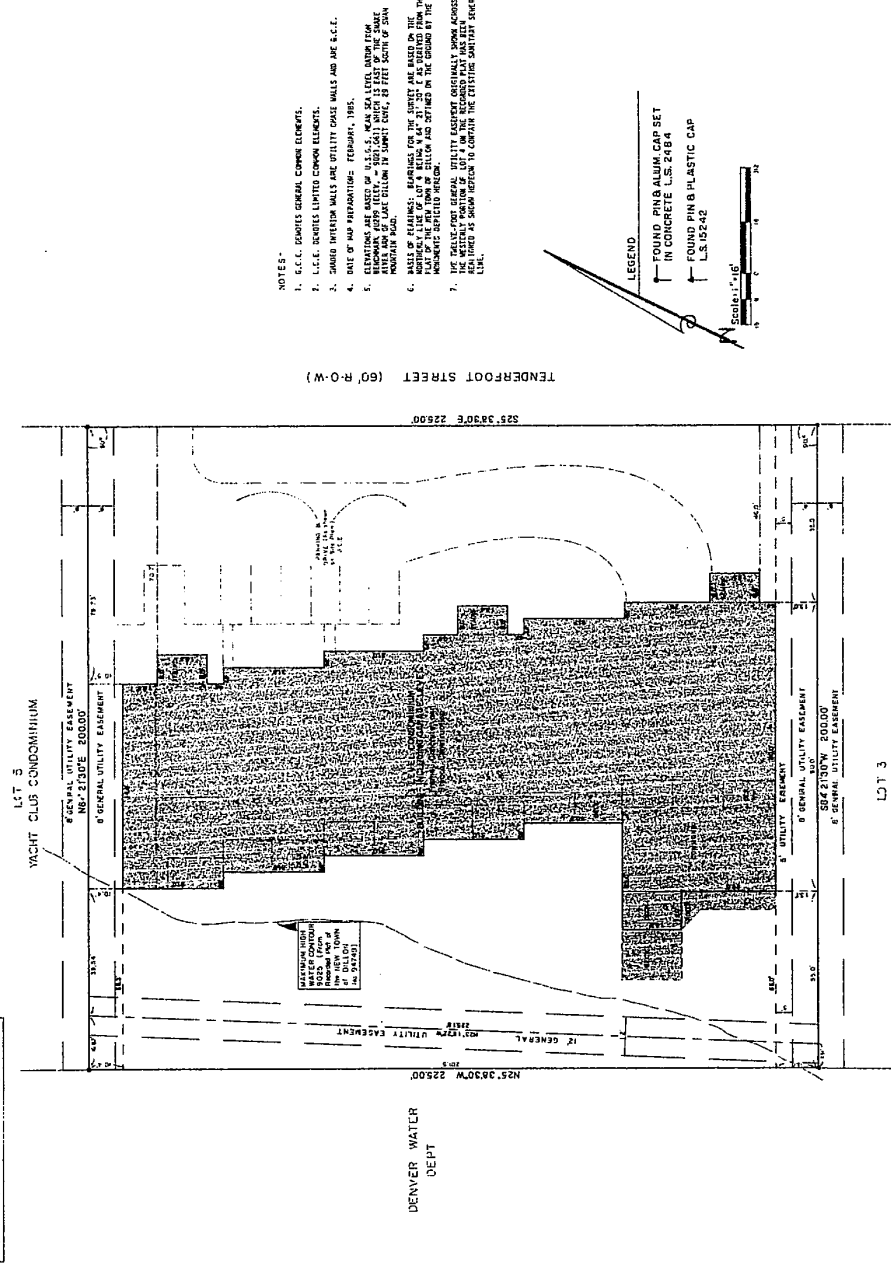
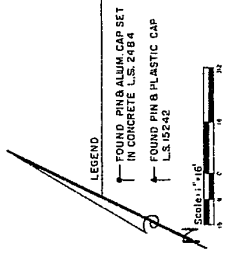


A CONDOMINIUM MAP OF
EAST BAY CONDOMINIUMS
 LOT 4, BLOCK J, NEW TOWN OF DILLON
 SUMMIT COUNTY, COLORADO

SHEET 1 OF 3



- NOTES -**
1. C.C.T. SHOWS GENERAL COMMON ELEMENTS.
 2. L.C.E. SHOWS LIMITED COMMON ELEMENTS.
 3. SHOWN INTERIOR WALLS ARE UTILITY DOOR WALLS AND ARE S.C.C.
 4. DATE OF MAP PREPARATION: FEBRUARY, 1985.
 5. ELEVATIONS ARE BASED ON U.S.C.S. MEAN SEA LEVEL, ABOVE THE BENCHMARK AT THE INTERSECTION OF DILLON AND TENDERFOOT STREETS, 100 FEET SOUTH OF SWAN MOUNTAIN ROAD.
 6. BASIS OF ELEVATIONS, BEARINGS FOR THE SURVEY ARE BASED ON THE PLAN OF THE BAY TOWN OF DILLON AND SET FORTH IN THE RECORDS OF THE RECORDS DEPARTMENT HEREIN.
 7. THE MULTIPURPOSE UTILITY EASEMENT ORIGINALLY SHOWN ACROSS LOT 4, BLOCK J, NEW TOWN OF DILLON, WAS REDESIGNED AND RE-LOCATED AS SHOWN HEREIN TO OBTAIN THE EXISTING EXTERIOR SEWER LINE.



LEGAL DESCRIPTION
 A TRACT OF LAND BEING ALL OF LOT 4, BLOCK J, NEW TOWN OF DILLON, RECORDED IN THE OFFICE OF THE COUNTY CLERK AND RECORDER, SUMMIT COUNTY, COLORADO, CONTAINING 1.32 ACRES, MORE OR LESS.

DECLARATION
 I, the undersigned, a professional land surveyor, do hereby certify that the above described premises are being subdivided into units and common elements as shown on the attached plat, and that the same are being offered for sale as a condominium project in accordance with the provisions of the Colorado Condominium Act, Chapter 38, Article 10, C.R.S., and that the same are being offered for sale as a condominium project in accordance with the provisions of the Colorado Condominium Act, Chapter 38, Article 10, C.R.S., and that the same are being offered for sale as a condominium project in accordance with the provisions of the Colorado Condominium Act, Chapter 38, Article 10, C.R.S.

BY: *[Signature]*
 SURVEYOR

ACKNOWLEDGEMENT
 STATE OF COLORADO: ss
 COUNTY OF SOUTHWEST: ss
 I, the undersigned, a professional land surveyor, do hereby certify that the above described premises are being subdivided into units and common elements as shown on the attached plat, and that the same are being offered for sale as a condominium project in accordance with the provisions of the Colorado Condominium Act, Chapter 38, Article 10, C.R.S., and that the same are being offered for sale as a condominium project in accordance with the provisions of the Colorado Condominium Act, Chapter 38, Article 10, C.R.S.

BY: *[Signature]*
 COUNTY CLERK

BY: *[Signature]*
 COUNTY CLERK

TITLE COMPANY'S CERTIFICATION
 I, the undersigned, a professional land surveyor, do hereby certify that the above described premises are being subdivided into units and common elements as shown on the attached plat, and that the same are being offered for sale as a condominium project in accordance with the provisions of the Colorado Condominium Act, Chapter 38, Article 10, C.R.S., and that the same are being offered for sale as a condominium project in accordance with the provisions of the Colorado Condominium Act, Chapter 38, Article 10, C.R.S.

BY: *[Signature]*
 TITLE COMPANY

SURVEYOR'S CERTIFICATE
 I, the undersigned, a professional land surveyor, do hereby certify that the above described premises are being subdivided into units and common elements as shown on the attached plat, and that the same are being offered for sale as a condominium project in accordance with the provisions of the Colorado Condominium Act, Chapter 38, Article 10, C.R.S., and that the same are being offered for sale as a condominium project in accordance with the provisions of the Colorado Condominium Act, Chapter 38, Article 10, C.R.S.

BY: *[Signature]*
 SURVEYOR

CLERK'S ACCEPTANCE
 I, the undersigned, a professional land surveyor, do hereby certify that the above described premises are being subdivided into units and common elements as shown on the attached plat, and that the same are being offered for sale as a condominium project in accordance with the provisions of the Colorado Condominium Act, Chapter 38, Article 10, C.R.S., and that the same are being offered for sale as a condominium project in accordance with the provisions of the Colorado Condominium Act, Chapter 38, Article 10, C.R.S.

BY: *[Signature]*
 COUNTY CLERK

Robillard & Associates,
 County Recorder / Land Surveyor
 1000 17th Street, Suite 1000
 Denver, Colorado 80202
 P.O. Box 2117, Delta, Colorado 80424

299051

1 of 3

299051

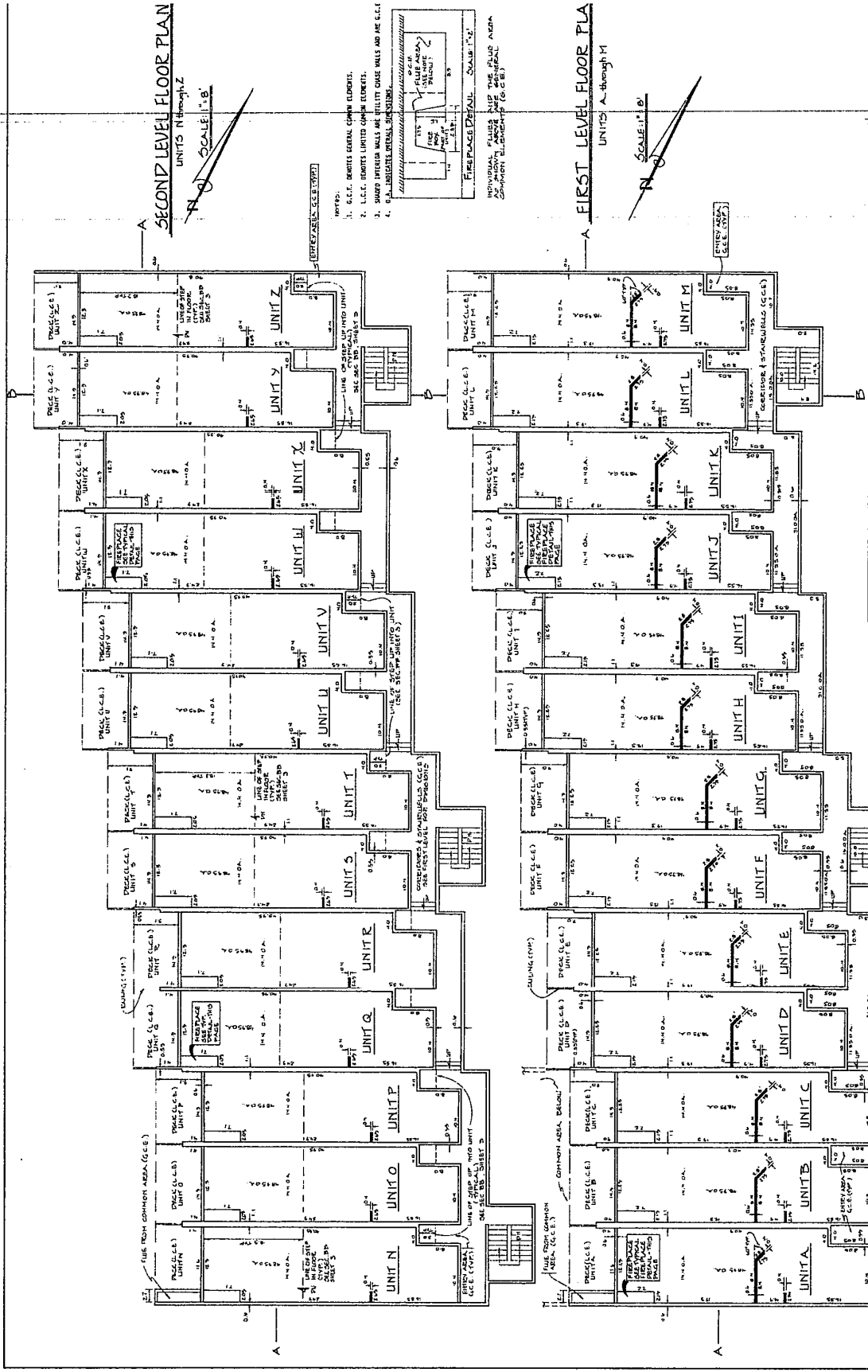
Pg 2 of 3

SECOND LEVEL FLOOR PLAN

UNITS N through Z
SCALE: 1/8"

FIRST LEVEL FLOOR PLAN

UNITS A through M
SCALE: 1/8"



A CONDOMINIUM MAP OF EAST BAY CONDOMINIUMS

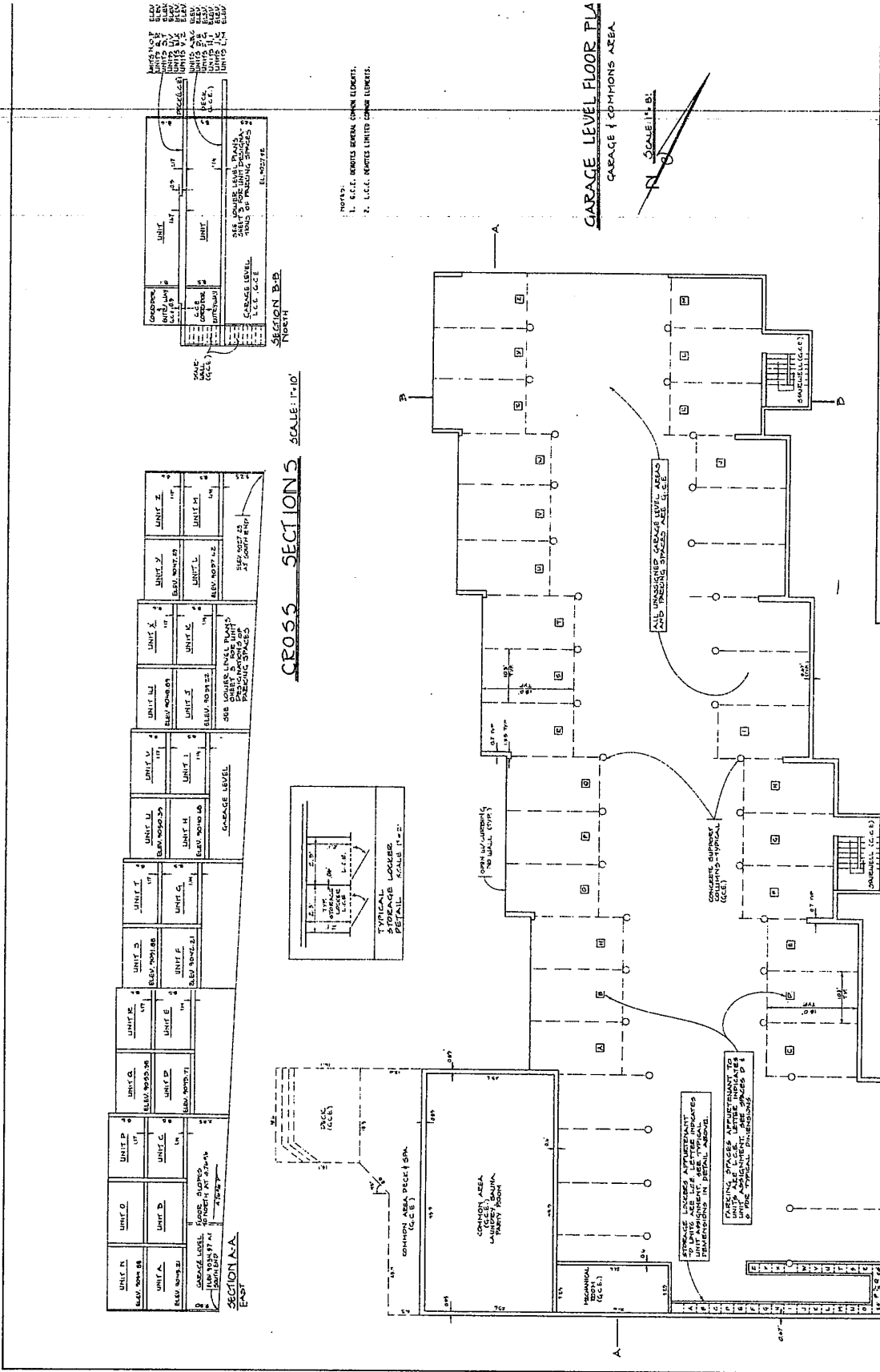
Sheet 2 of 3

Project No.	299051
Client	REBOLLARD & ASSOCIATES
Scale	1/8"
Date	10/15/03
Sheet	2 of 3

Rebollard & Associates
 Consulting Engineer / Land Surveyor
 Permitting / Construction Manager
 #10, Box 2417
 Denver, Colorado 80202

299051

Page 3 of 3



A CONDOMINIUM MAP OF
EAST BAY CONDOMINIUMS
 Sheet 3 of 3

Robillard & Associates,
 Chartered
 Planning / Construction Management
 P.O. Box 2117 | Denver, Colorado 80202

Project No.	299051	Sheet No.	3
Client	East Bay Condominiums	Scale	1/8" = 1'-0"
Drawn	[Signature]	Check	[Signature]
Date	10/15/01	Project	East Bay Condominiums