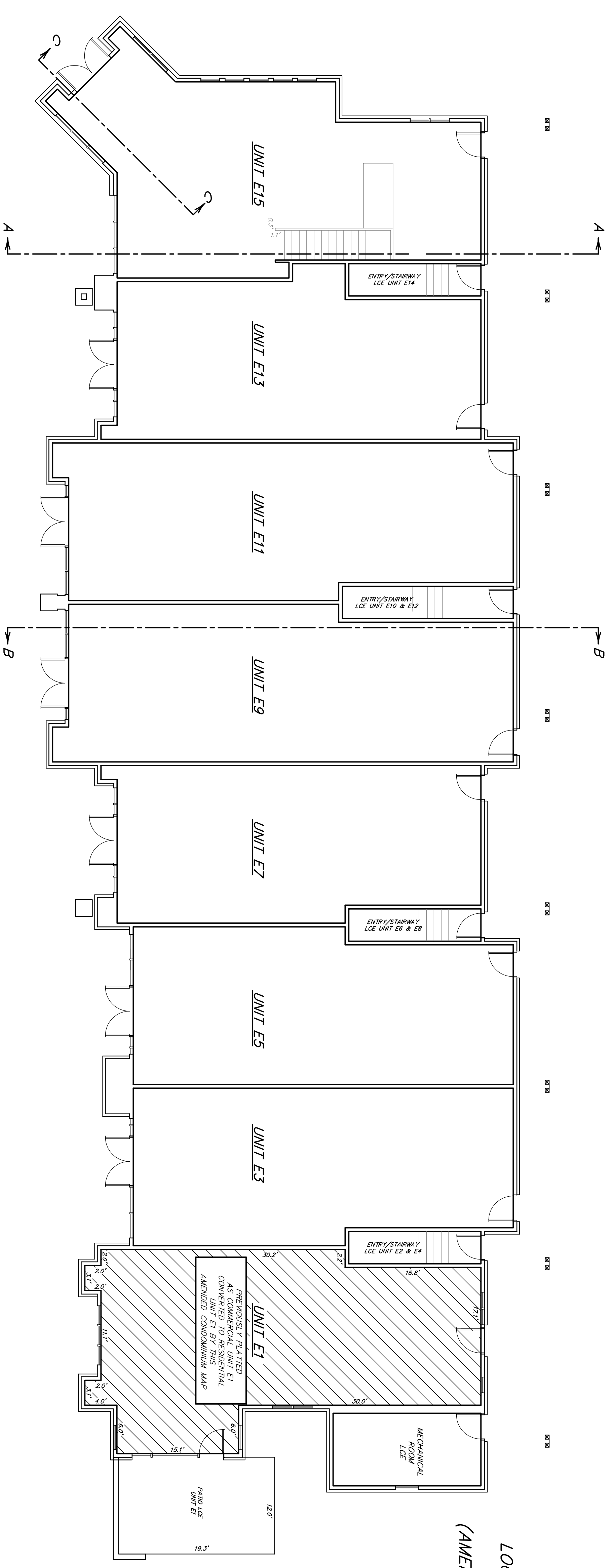
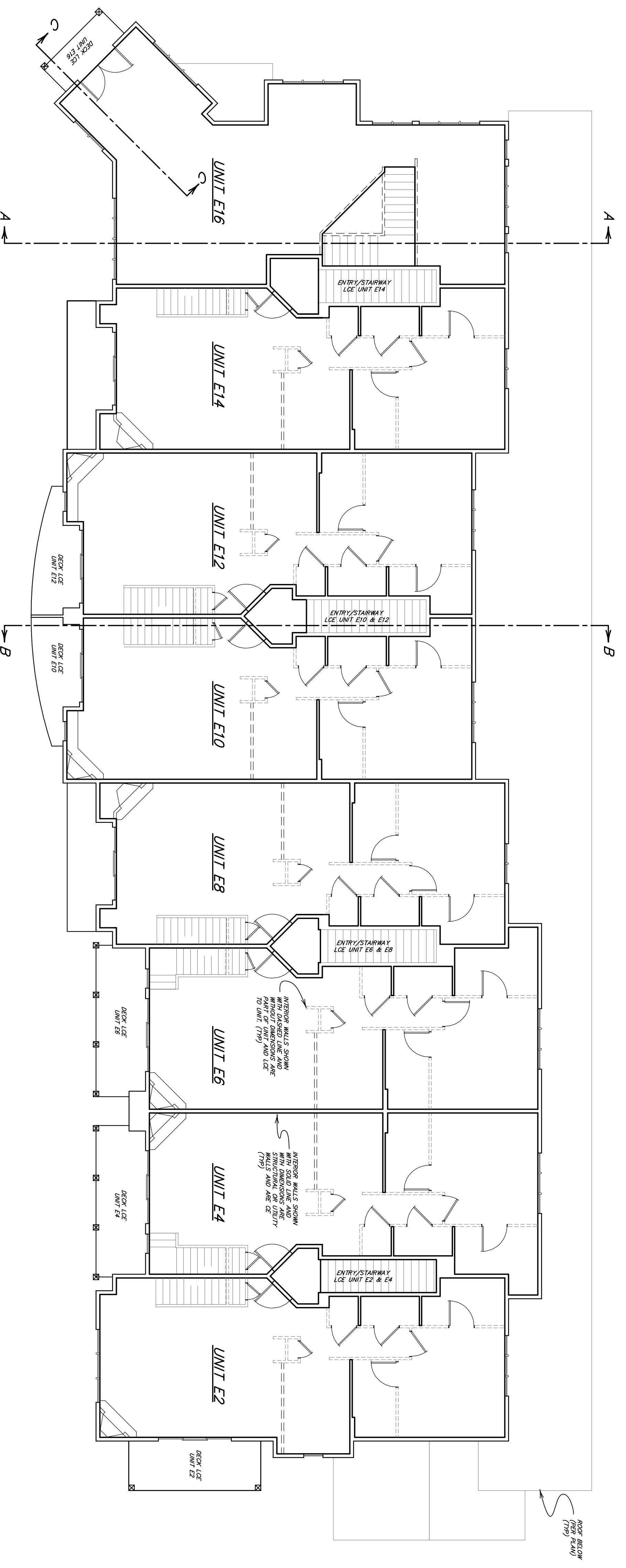


SECOND AMENDMENT TO THE CONDOMINIUM MAP
TO EFFECT THE SECOND AMENDMENT TO THE
CONDOMINIUM DECLARATION
FOR THE DRAKE LANDING CONDOMINIUMS
LOCATED IN SECTION 26, TOWNSHIP 5 SOUTH, RANGE 78 WEST
TOWN OF FRISCO, SUMMIT COUNTY, COLORADO
(AMENDING THE FIRST AND FOURTH PHASES OF THE DEVELOPMENT)
SHEET 7 OF 7

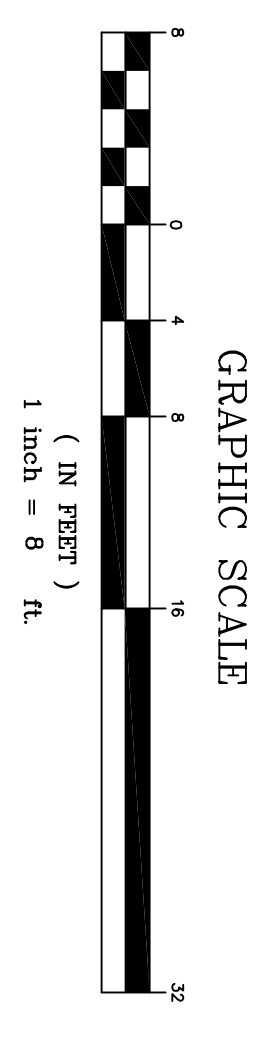


FIRST LEVEL PLAN
Scale: 1" = 8'



SECOND LEVEL PLAN
Scale: 1" = 8'

THIS CONDOMINIUM MAP ORIGINALLY RECORDED AS
THE THIRD SUPPLEMENTAL CONDOMINIUM MAP OF
THE DRAKE LANDING CONDOMINIUMS
LOT R4, A RESUBDIVISION OF LOT 2, BLOCK 1, LAKEPOINT AT FRISCO
LOCATED IN SECTION 26, TOWNSHIP 5 SOUTH, RANGE 78 WEST
TOWN OF FRISCO, SUMMIT COUNTY, COLORADO
SHEET 2 OF 4
AT RECEPTION NUMBER 719397
(PLANS DATED MAY 28, 2003)



Legend
CE = COMMON ELEMENT
LCE = LIMITED COMMON ELEMENT APPURTENANT
TO UNITS DESIGNATED