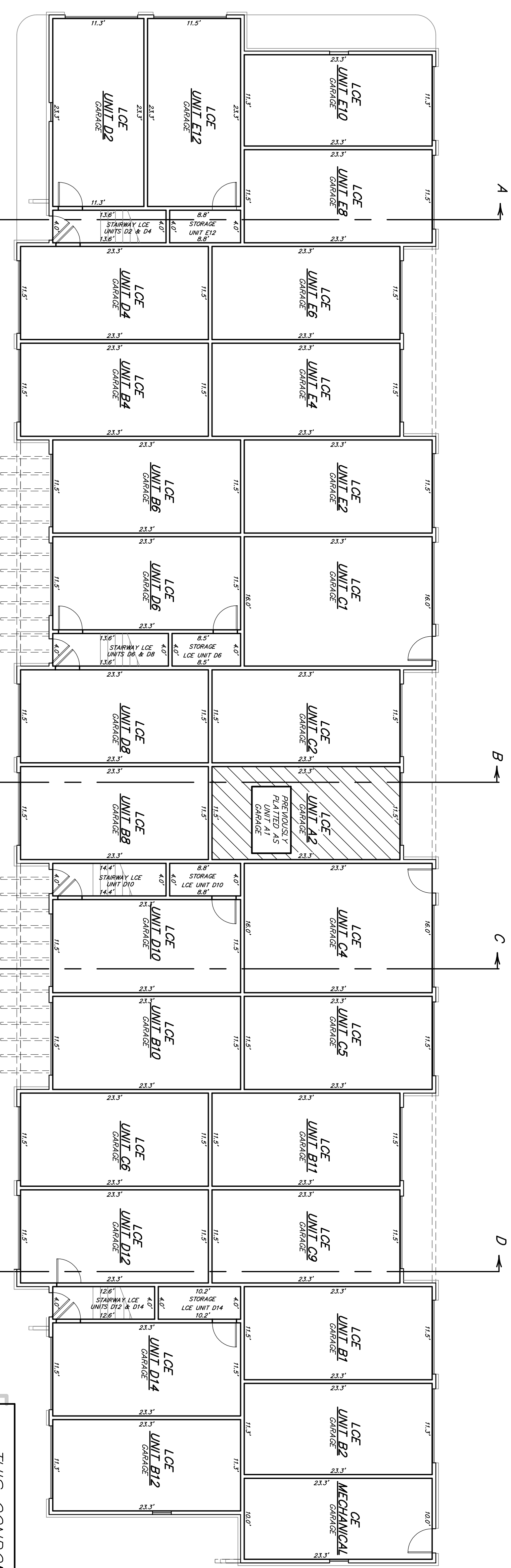
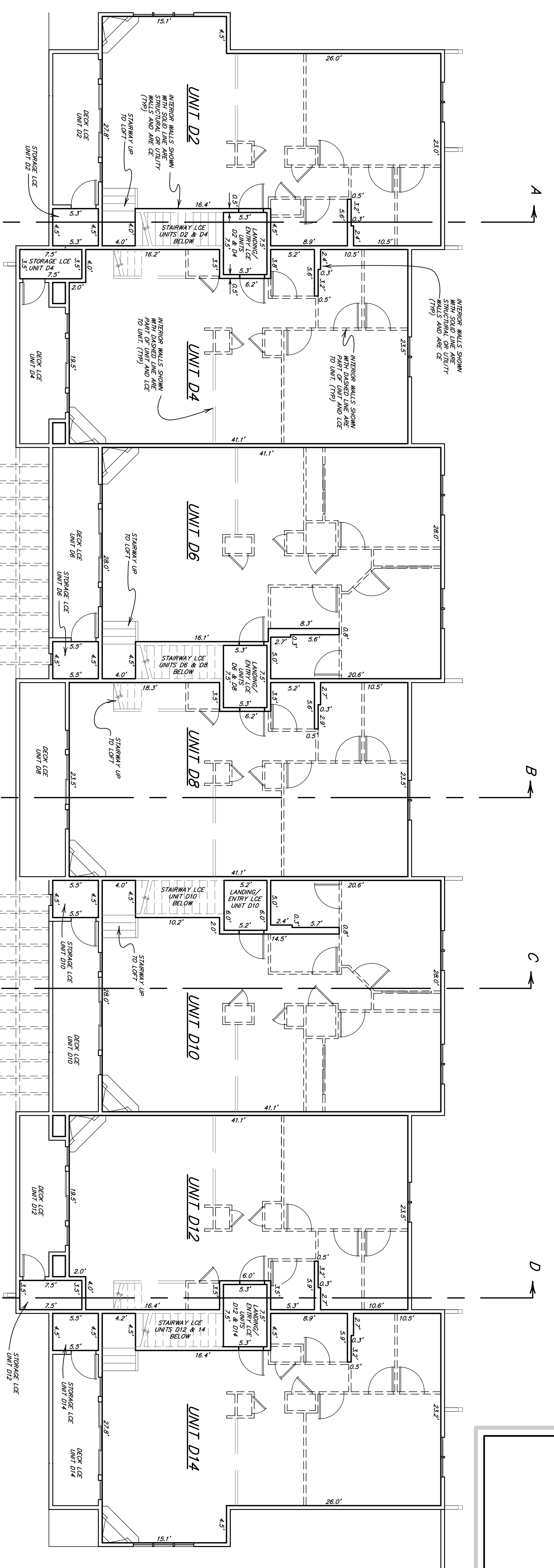


SECOND AMENDMENT TO THE CONDOMINIUM MAP  
 TO EFFECT THE SECOND AMENDMENT TO THE CONDOMINIUM DECLARATION  
 FOR THE DRAKE LANDING CONDOMINIUMS  
 LOCATED IN SECTION 26, TOWNSHIP 5 SOUTH, RANGE 78 WEST  
 TOWN OF FRISCO, SUMMIT COUNTY, COLORADO  
 (AMENDING THE FIRST AND FOURTH PHASES OF THE DEVELOPMENT)  
 SHEET 5 OF 7

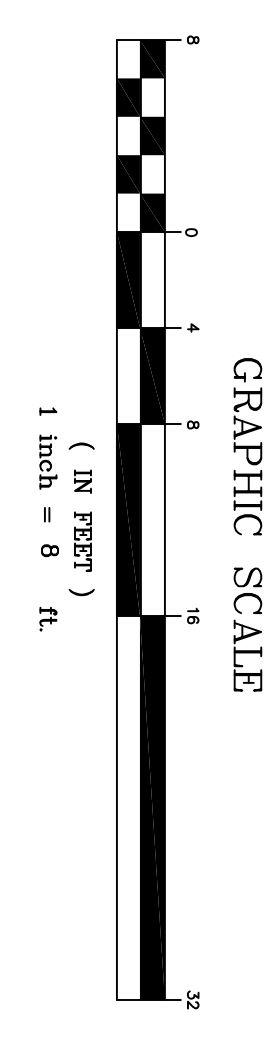


BUILDING D  
 FIRST LEVEL PLAN  
 SCALE: 1" = 8'

THIS CONDOMINIUM MAP ORIGINALLY RECORDED AS  
 FIRST AMENDMENT TO  
 THE SECOND SUPPLEMENTAL CONDOMINIUM MAP OF  
 THE DRAKE LANDING CONDOMINIUMS  
 LOT R4, A RESUBDIVISION OF LOT 2, BLOCK 1, LAKEPOINT AT FRISCO  
 LOCATED IN SECTION 26, TOWNSHIP 5 SOUTH, RANGE 78 WEST  
 TOWN OF FRISCO, SUMMIT COUNTY, COLORADO  
 SHEET 2 OF 5  
 AT RECEPTION NUMBER 823860  
 (PLANS DATED SEPTEMBER 9, 2004)



BUILDING D  
 SECOND LEVEL PLAN  
 SCALE: 1" = 8'



**Legend**  
 CE = COMMON ELEMENT  
 LCE = LIMITED COMMON ELEMENT APPLICABLE TO UNITS DESIGNATED