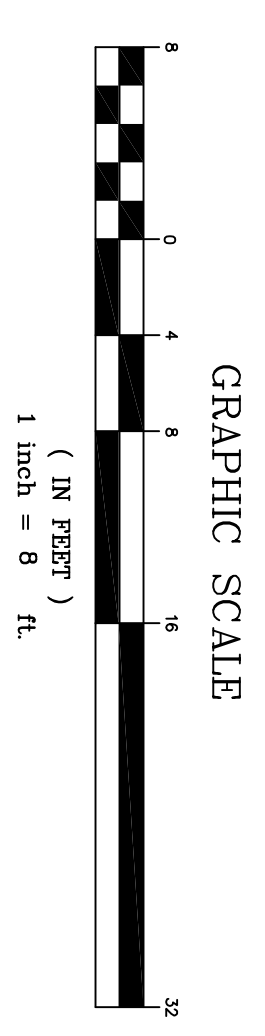
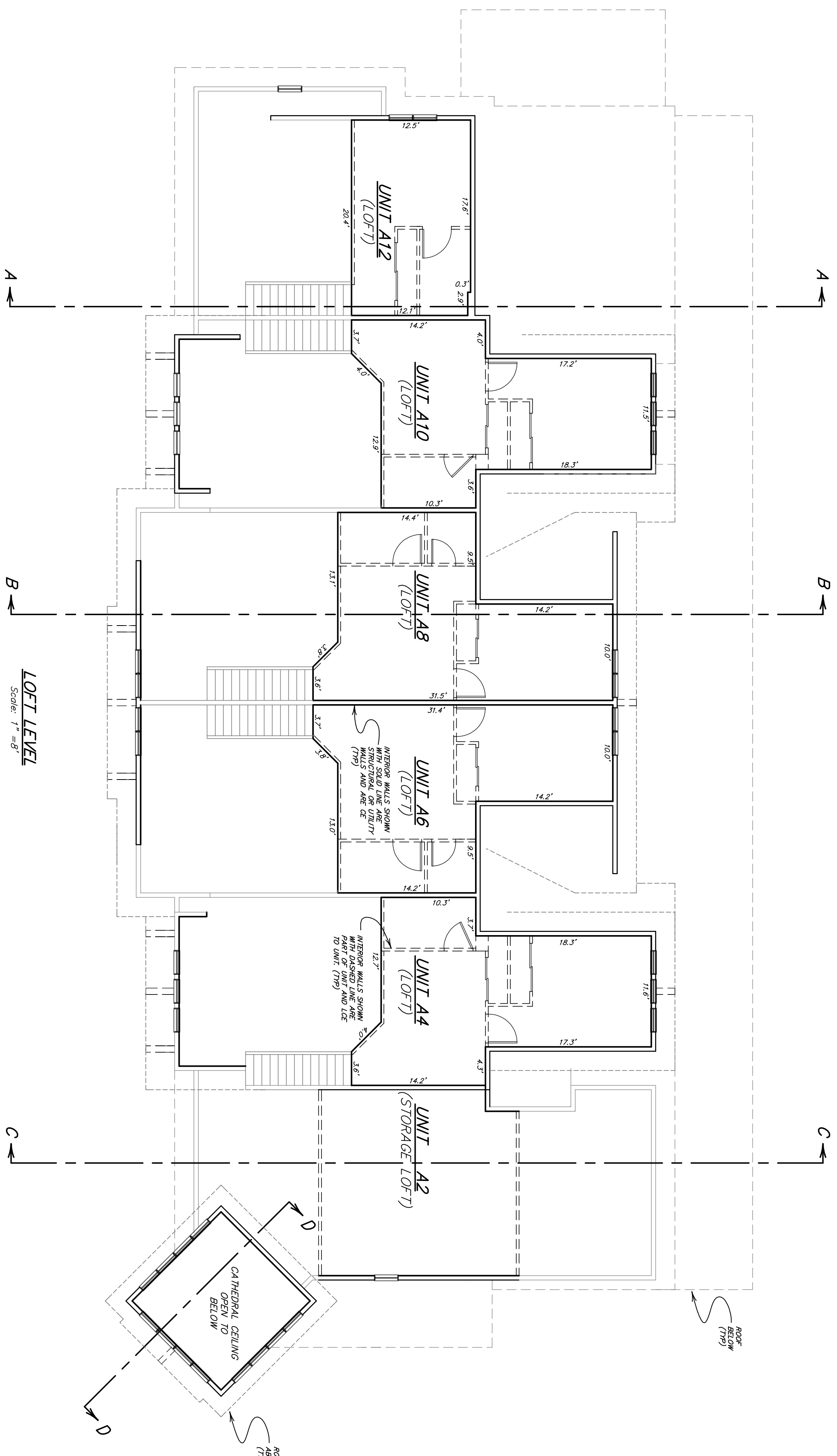
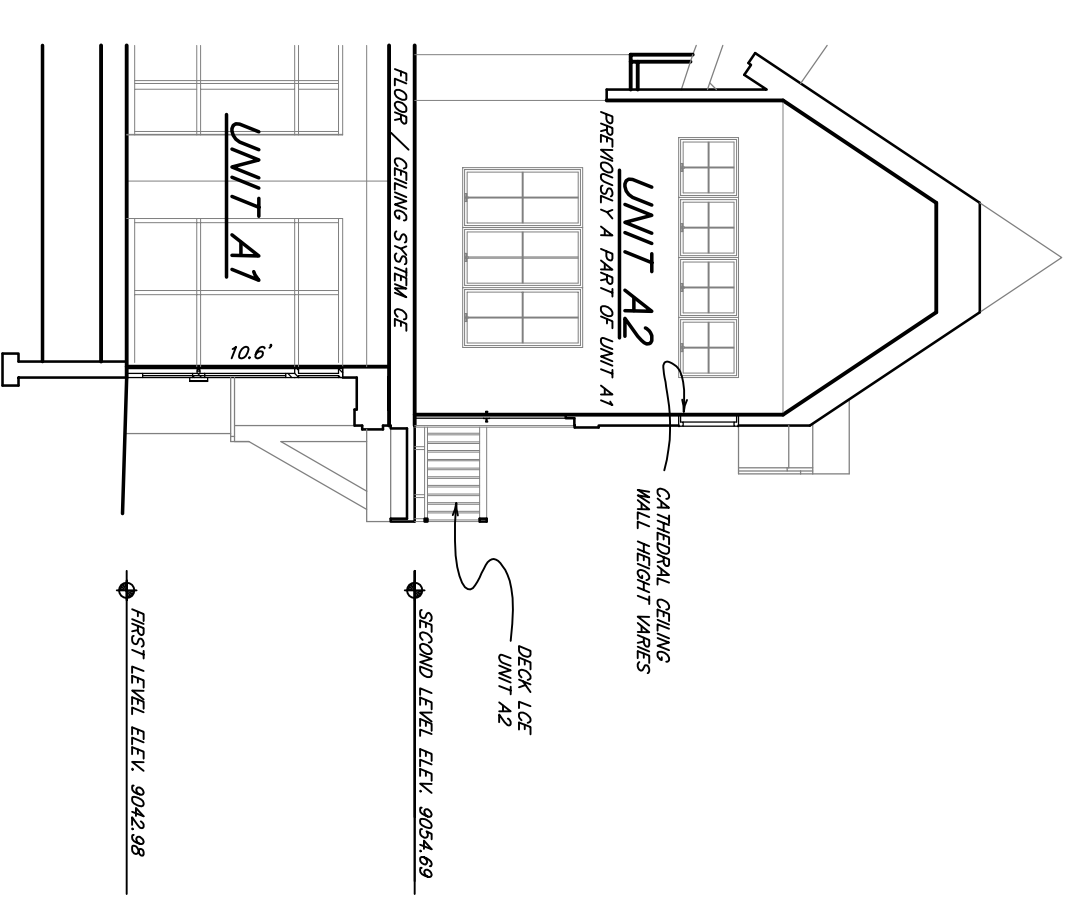


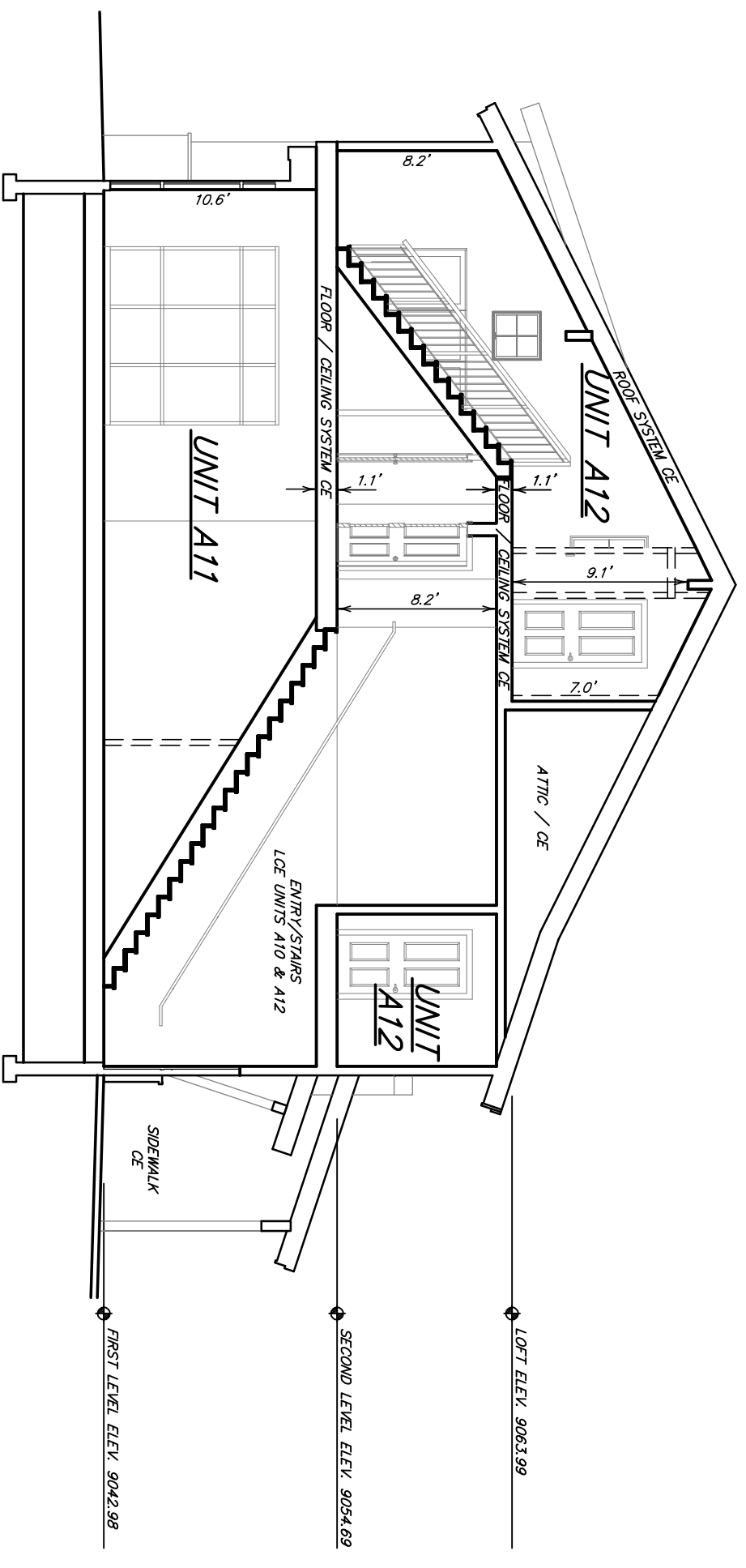
SECOND AMENDMENT TO THE CONDOMINIUM MAP
 TO EFFECT THE SECOND AMENDMENT TO THE CONDOMINIUM DECLARATION
 FOR THE DRAKE LANDING CONDOMINIUMS
 LOCATED IN SECTION 26, TOWNSHIP 5 SOUTH, RANGE 78 WEST
 TOWN OF FRISCO, SUMMIT COUNTY, COLORADO
 (AMENDING THE FIRST AND FOURTH PHASES OF THE DEVELOPMENT)
 SHEET 3 OF 7



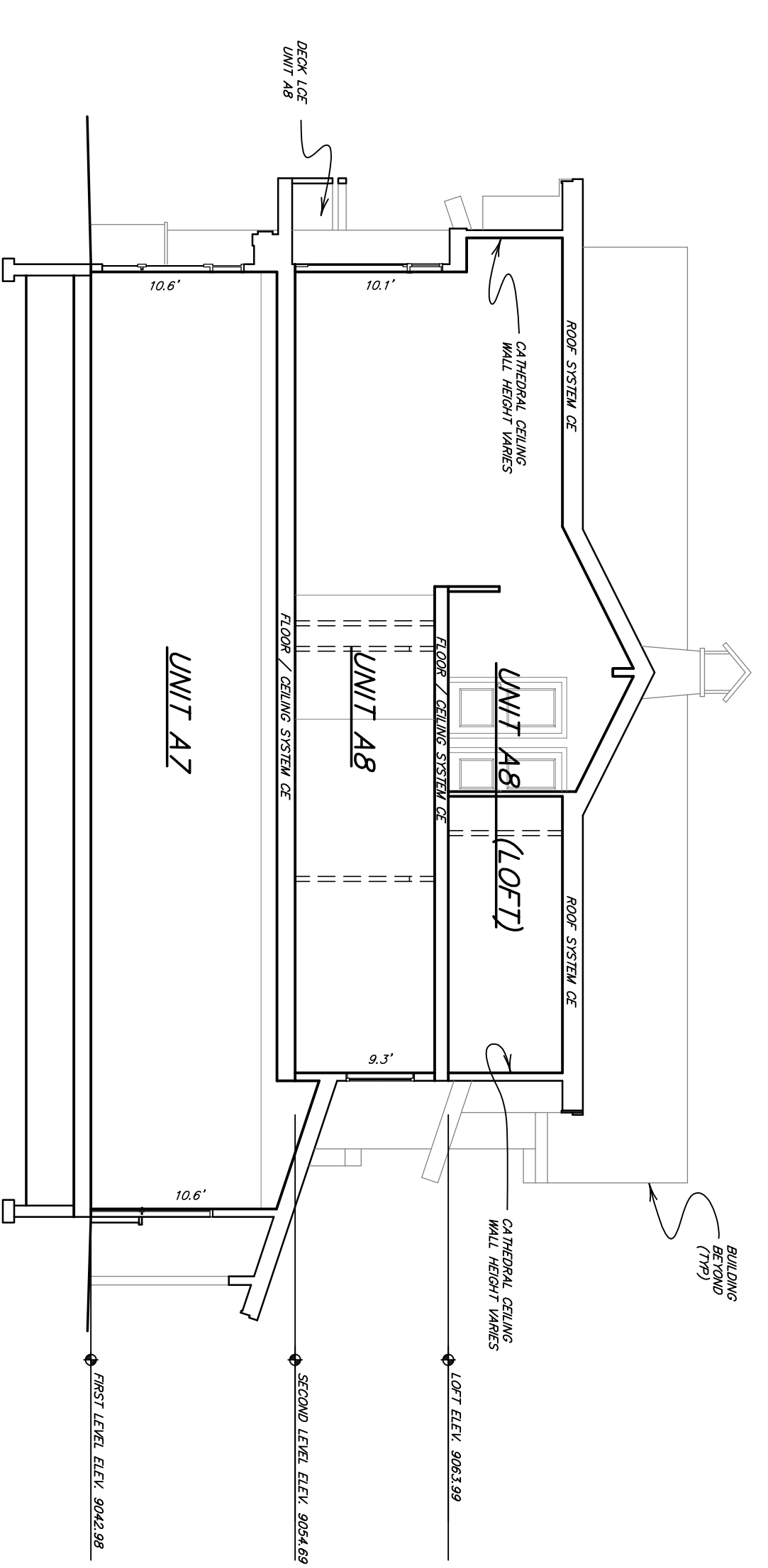
Legend
 CE = COMMON ELEMENT
 CEE = LIMITED COMMON ELEMENT APPURTENANT
 TO UNIT'S DESIGNATED



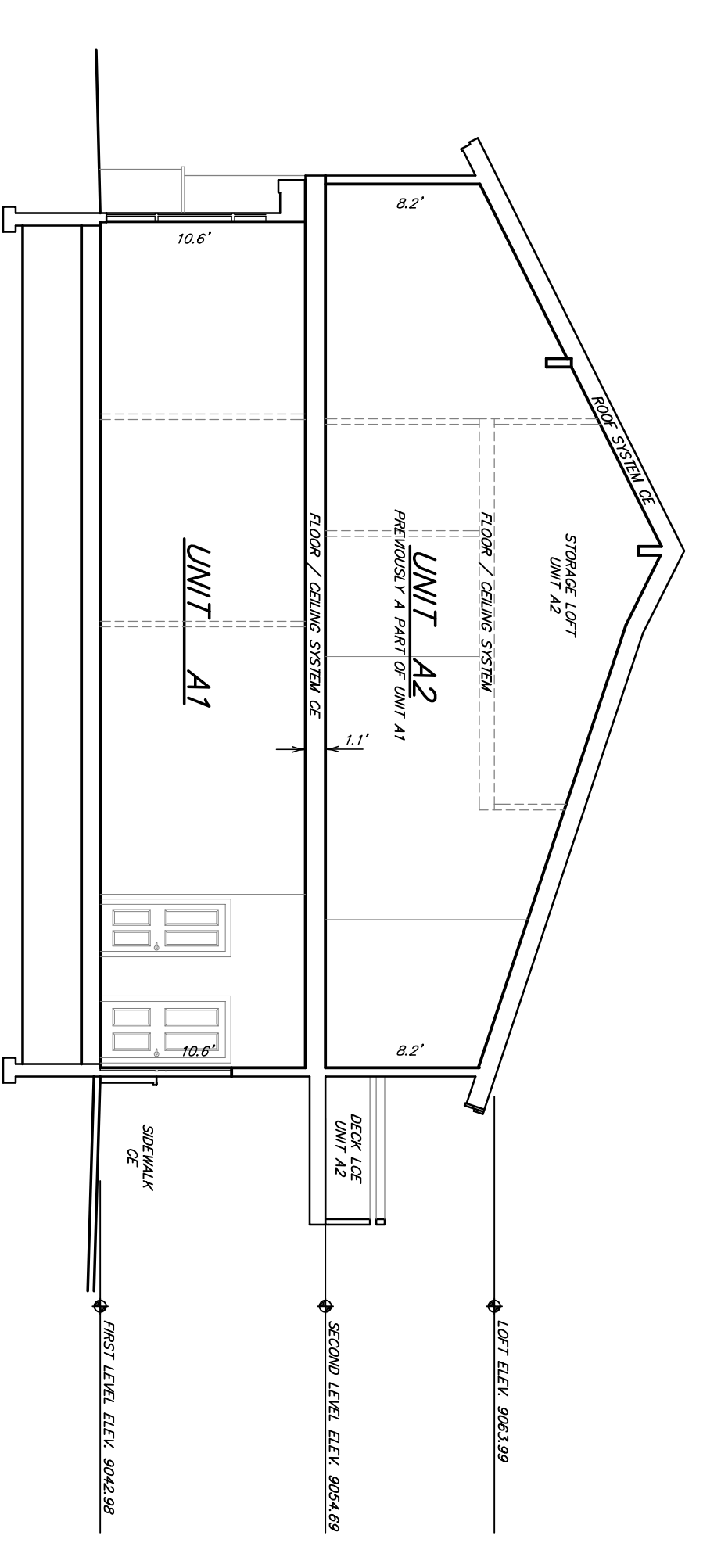
SECTION D-D
 Scale: 1" = 8'



SECTION A-A
 Scale: 1" = 8'



SECTION B-B
 Scale: 1" = 8'



SECTION C-C
 Scale: 1" = 8'