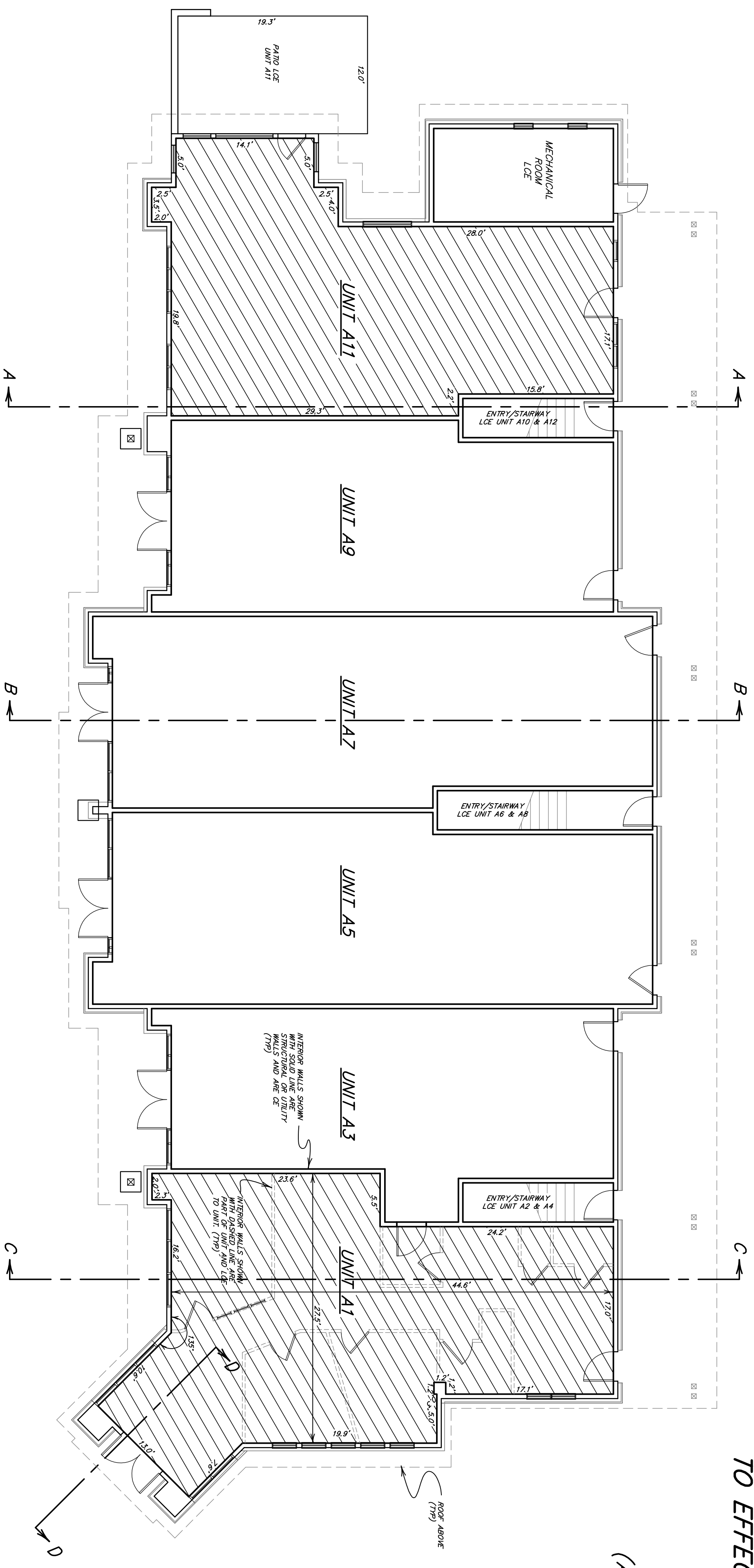
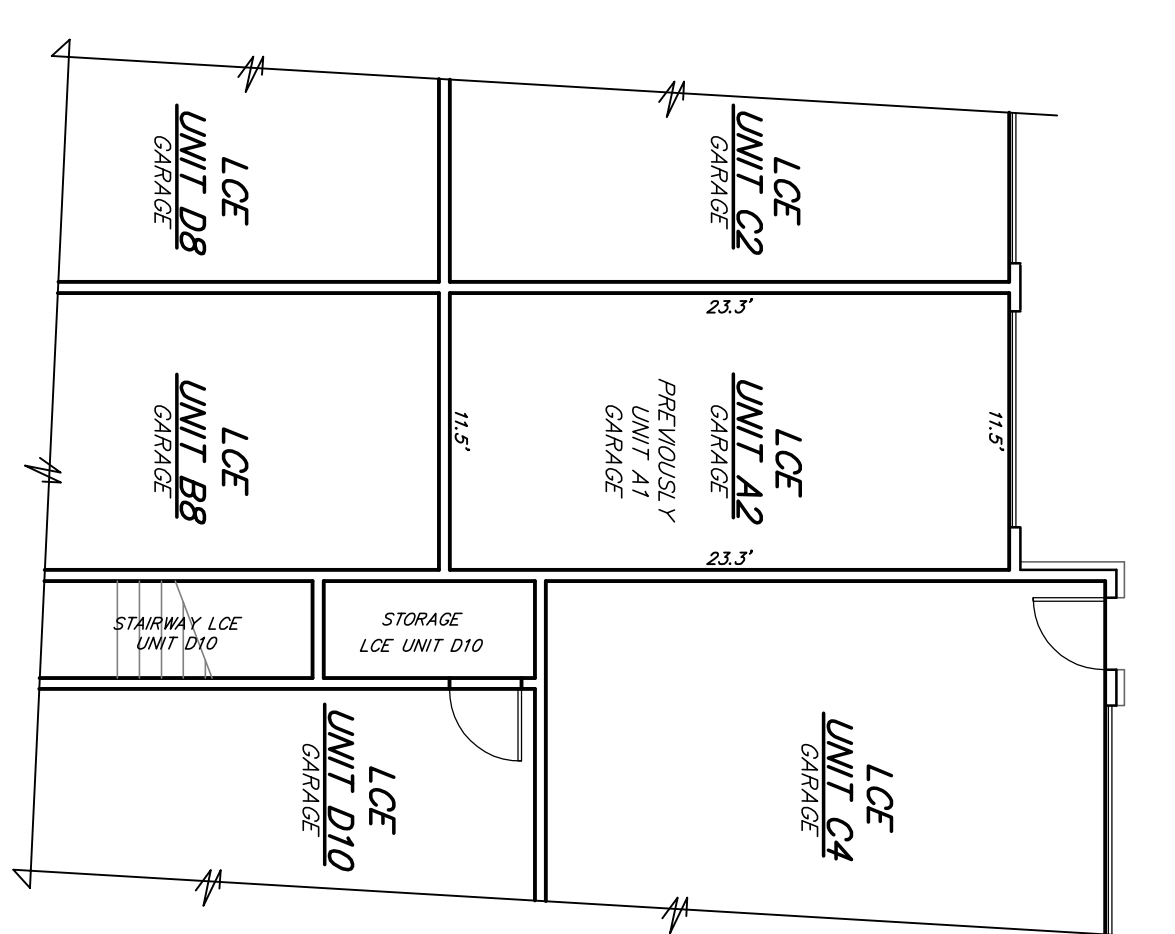


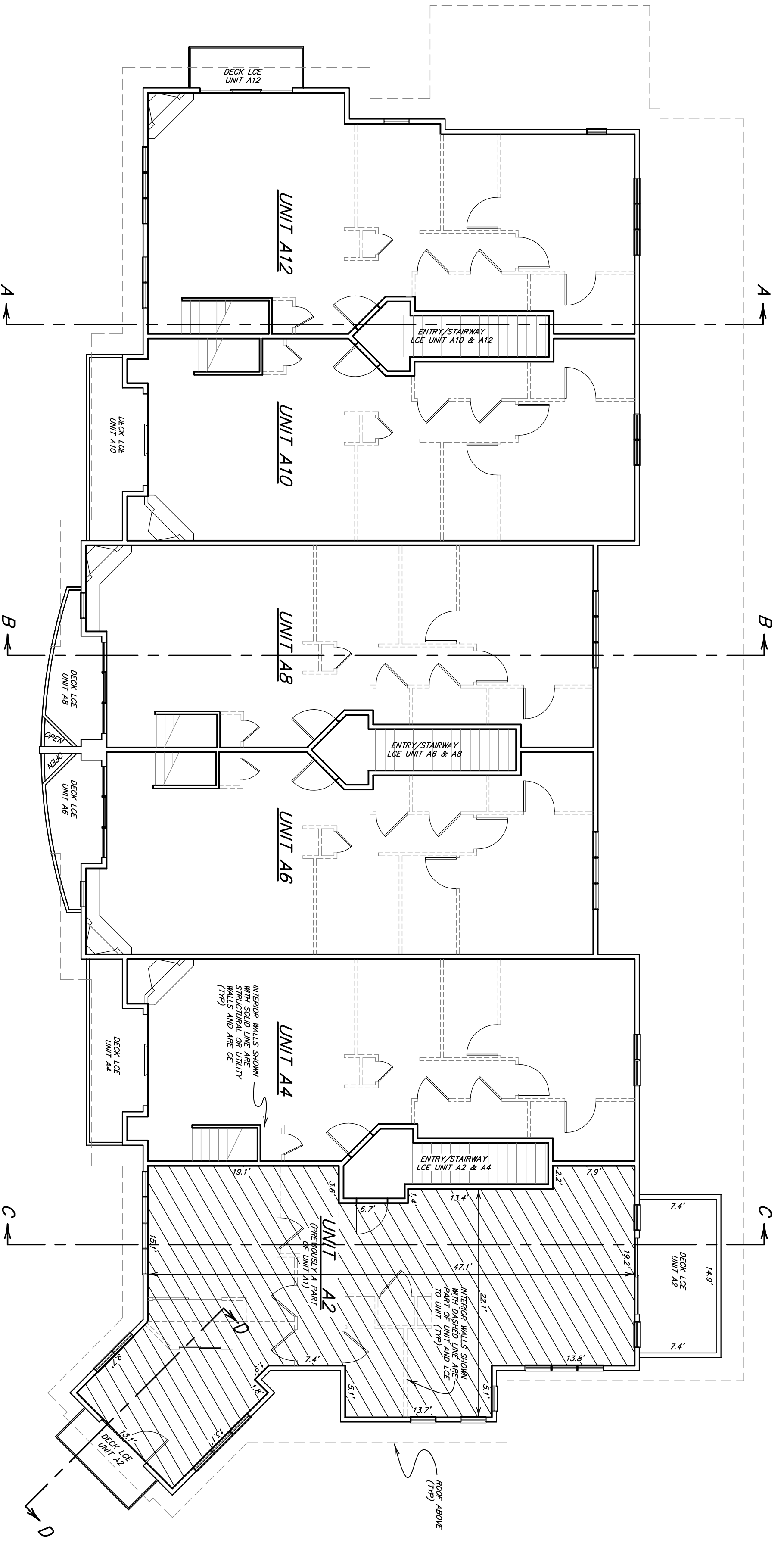
SECOND AMENDMENT TO THE CONDOMINIUM MAP
TO EFFECT THE SECOND AMENDMENT TO THE CONDOMINIUM DECLARATION
FOR THE DRAKE LANDING CONDOMINIUMS
 LOCATED IN SECTION 26, TOWNSHIP 5 SOUTH, RANGE 78 WEST
 TOWN OF FRISCO, SUMMIT COUNTY, COLORADO
 (AMENDING THE FIRST AND FOURTH PHASES OF THE DEVELOPMENT)
 SHEET 2 OF 7



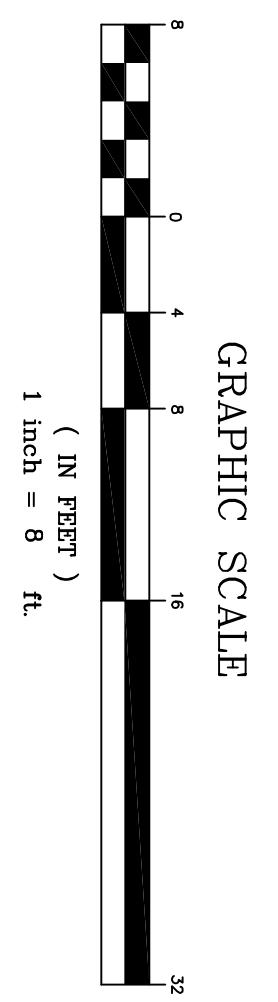
FIRST LEVEL PLAN
 Scale: 1" = 8'



**BUILDING D
 FIRST LEVEL PLAN**
 Scale: 1" = 8'
 SET SHEET 5 FOR COMPLETE
 BUILDING D CONDOMINIUM MAP



SECOND LEVEL PLAN
 Scale: 1" = 8'



Legend
 CE = COMMON ELEMENT
 LCE = LIMITED COMMON ELEMENT APPOINTMENT
 TO UNITS DESIGNATED