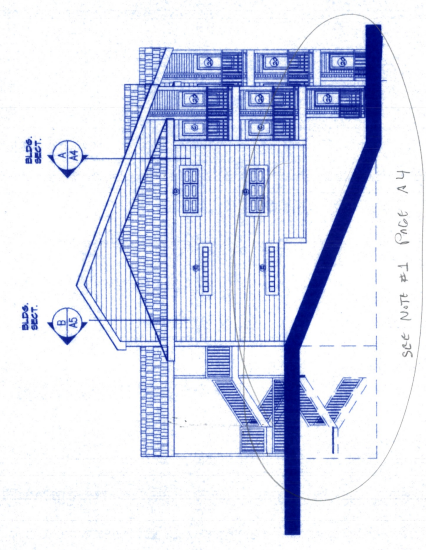
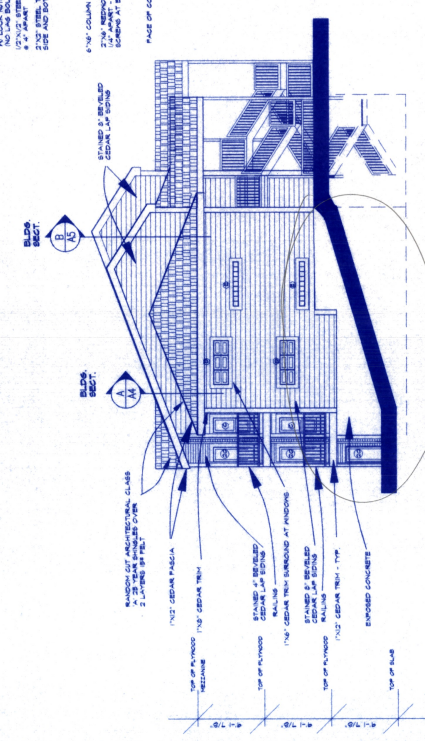


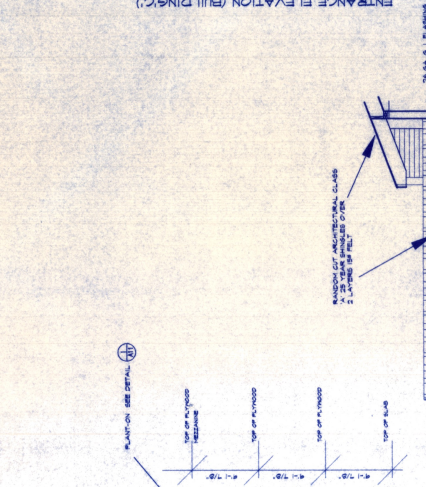
ENTRANCE ELEVATION (BUILDING C)  
 NORTH  
 1/8"=1'-0"



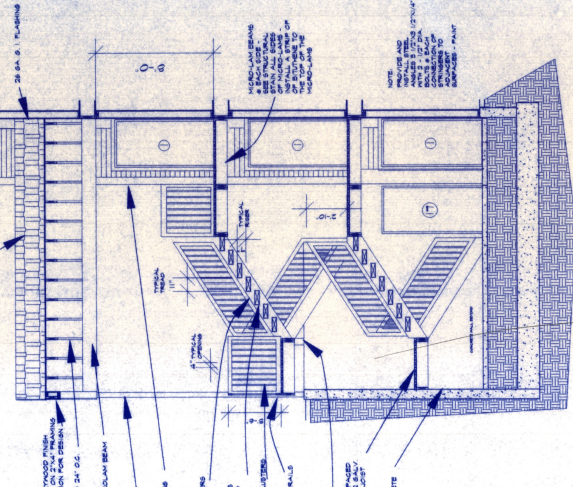
WEST SIDE ELEVATION (BUILDING C)  
 1/8"=1'-0"



EAST SIDE ELEVATION (BUILDING C)  
 1/8"=1'-0"



ENTRANCE ELEVATION (BUILDING C)  
 SIDE ELEVATIONS  
 1/4"=1'-0"



1 EXTERIOR STAIR DETAIL  
 1/4"=1'-0"

C/M FOR  
 REPLACEMENT DETAILS TO BE SUPPLIED  
 TO SHOW HOW STAIRS RELATE TO  
 STAIR TOWER

SEE NOTE #1 PAGE A4

SEE NOTE #1 PAGE A4