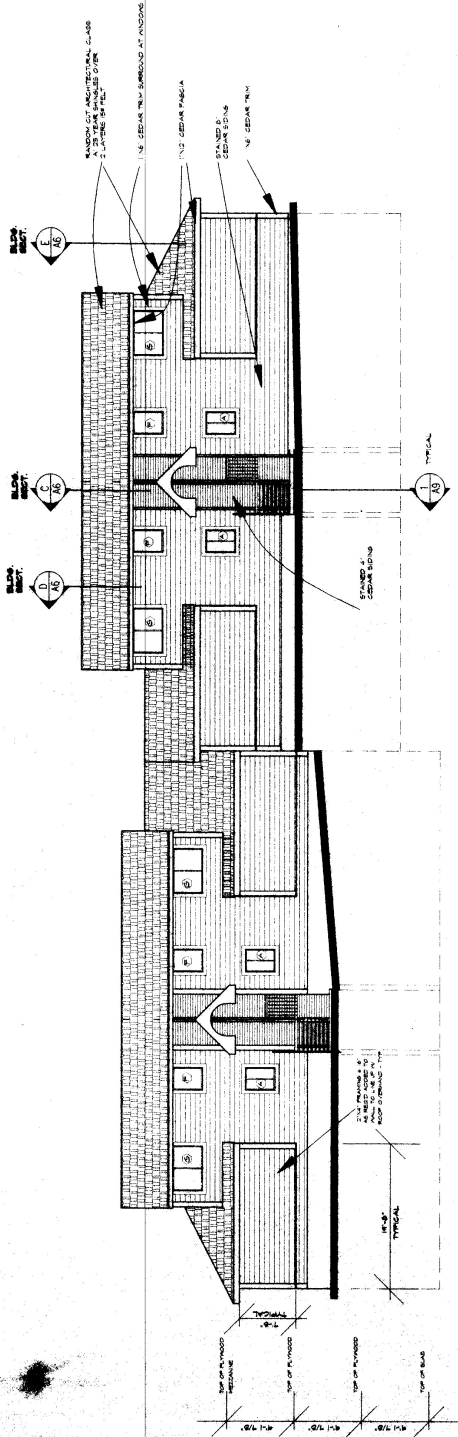
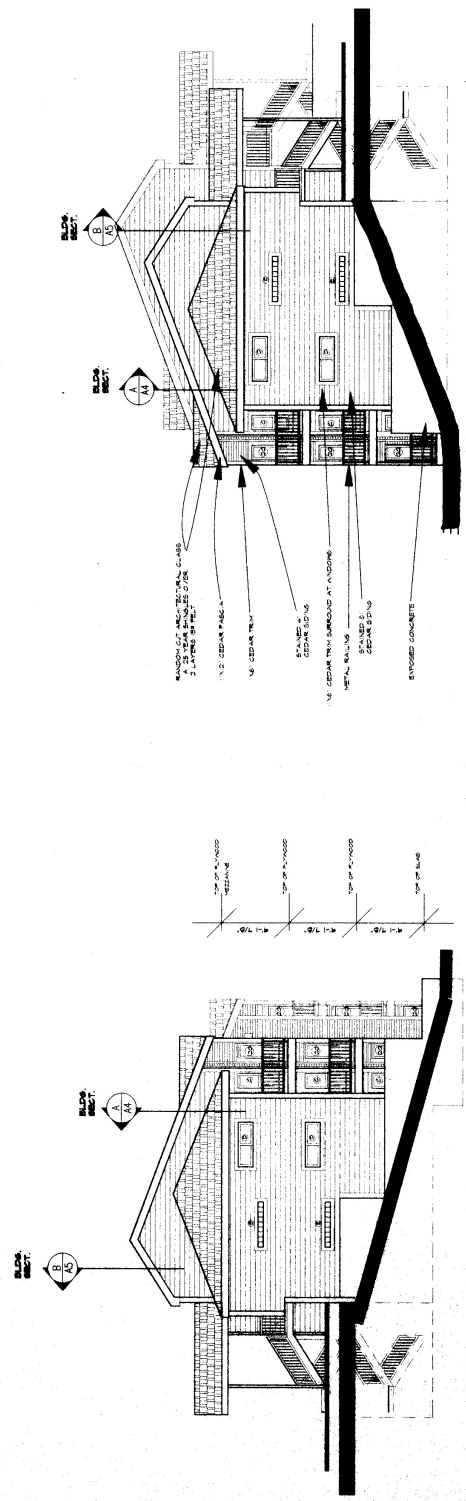


ENTRANCE ELEVATION (BUILDING "B")

SIDE ELEVATIONS



ENTRANCE ELEVATION BUILDING (B)
NORTH
1/8" = 1'-0"



WEST SIDE ELEVATION (BUILDING "B")
1/8" = 1'-0"

EAST SIDE ELEVATION (BUILDING "B")
1/8" = 1'-0"