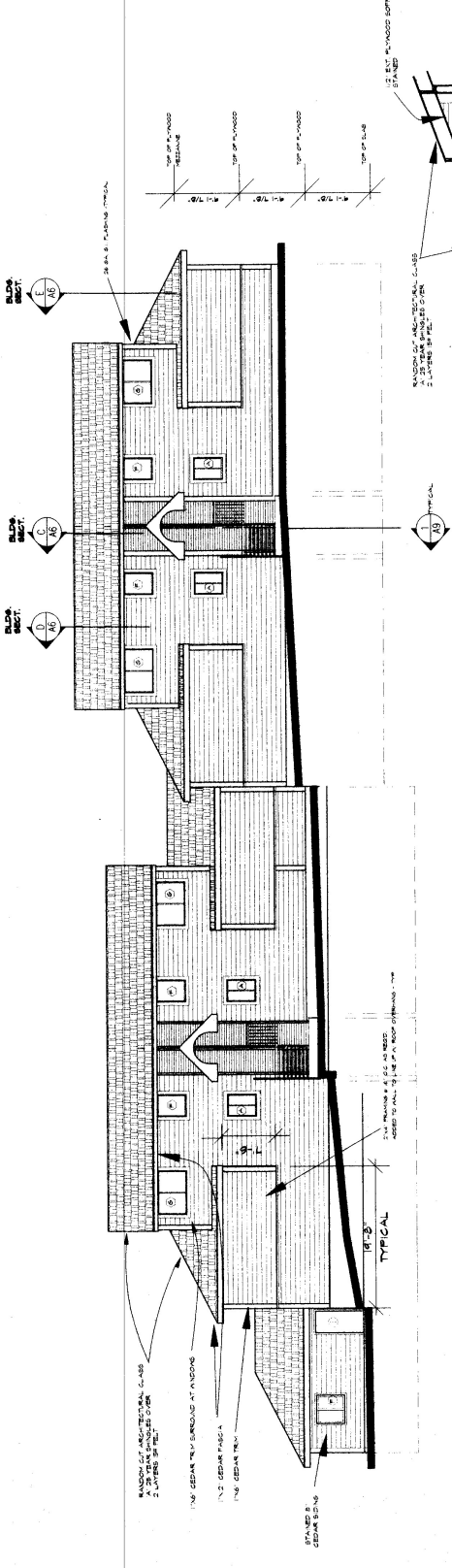
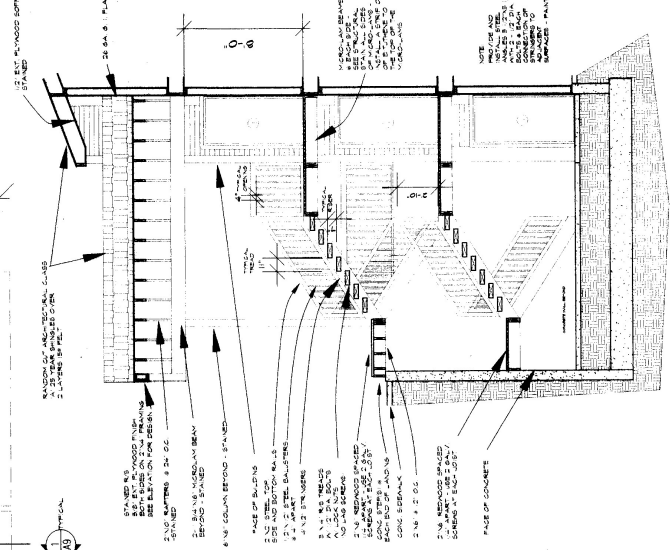


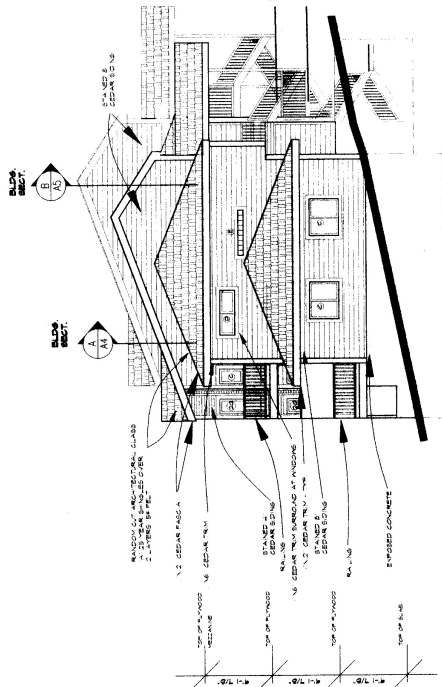
ENTRANCE ELEVATION (BUILDING 'C')
 SIDE ELEVATIONS



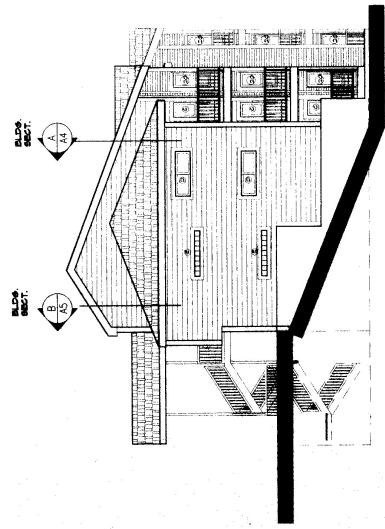
ENTRANCE ELEVATION (BUILDING 'A')
 NORTH
 1/8" = 1'-0"



EAST SIDE ELEVATION (BUILDING 'A')
 1/8" = 1'-0"



EAST SIDE ELEVATION (BUILDING 'A')
 1/8" = 1'-0"



WEST SIDE ELEVATION (BUILDING 'A')
 1/8" = 1'-0"